

HISTOLOGY

A histology slide showing a cross-section of tissue, likely from the gastrointestinal tract, stained with hematoxylin and eosin (H&E). The image displays glandular structures with numerous nuclei stained blue and cytoplasm/extracellular matrix stained pink. The glands are arranged in a somewhat irregular pattern, and there is a noticeable presence of inflammatory cells (leukocytes) within the tissue.



Azer Scientific

As an industry leader, **Azer Scientific** strives to offer top quality products at an exceptional value. We provide technical specifications, operating instructions, and complete descriptions to assist you in your buying decisions.

With over 30 years of laboratory expertise, our team is extremely knowledgeable, highly motivated, and well qualified to assist you. Our experience allows you to use us as a resource to identify and purchase the appropriate products for your application. Our professional staff is available to make your Azer buying experience convenient, efficient, and enjoyable.

If you do not see what you need in this catalog, please reach out to us. We specialize in developing new and innovative products, and our product line is continually growing to meet your needs.

Our mission is to consistently supply our customers with cost-effective, quality-engineered products, with exceptional customer service, and proven reliability. We value your business.



Azer Scientific is an
ISO 13485:2016
Certified Company

SPECIMEN COLLECTION	3
GROSSING	7
CASSETTES	10
FIXATION & PROCESSING	14
EMBEDDING	17
MICROTOMY	18
MICROSCOPE SLIDES & COVERSIPPING	20
STAINING	23
CYTOLOGY	37
ARCHIVING & STORAGE	40
SAFETY & CLEANUP	43
WORKSTATIONS & TABLES	46



Prefilled Formalin Containers

Azer Scientific's prefilled formalin containers are half-filled with a traditional 10% neutral buffered formalin fixative, used in histological applications for fixation and storage of tissue specimens. Our line of prefilled containers are specifically designed for safe collection and transport of various sized tissue specimens.

Private labeling for large volume customers is available.

- Polypropylene containers with polyethylene screw caps
- Smaller containers (20 mL-120 mL) are 95 kPa compliant
- Inner packaging allows for easy breakdown of the cases for distribution to other labs and doctors offices
- Inner packaging made of chipboard material, safe for operating room use

Formalock™

Smaller sized prefilled formalin containers feature Formalock™ closures.

- Two audible "clicks" to assure the user that the seal is fully engaged
- Eliminates annoyance and hazard of leaking prefills
- Ensures safe transport of specimen



Cat. No.	Description	UOM
PFNBF-07	Prefilled Formalin Container, 7 mL (5 mL filled)	100/tray, 5 trays/case (500)
PFNBF-20	Prefilled Formalin Container, Formalock™, 20 mL (1/2 filled)	32/pack, 4 packs/case (128)
B-PFNBF-20	Prefilled Formalin Container, Formalock™, 20 mL (1/2 filled), bulk	32/pack, 24 packs/case (768)
PFNBF-40	Prefilled Formalin Container, Formalock™, 40 mL (1/2 filled)	24/pack, 2 packs/case (48)
B-PFNBF-40	Prefilled Formalin Container, Formalock™, 40 mL (1/2 filled), bulk	24/pack, 20 packs/case (480)
PFNBF-60	Prefilled Formalin Container, Formalock™, 60 mL (1/2 filled)	27/pack, 2 packs/case (54)
B-PFNBF-60	Prefilled Formalin Container, Formalock™, 60 mL (1/2 filled), bulk	27/pack, 12 packs/case (324)
PFNBF-90	Prefilled Formalin Container, Formalock™, 90 mL (1/2 filled)	12/pack, 4 packs/case (48)
B-PFNBF-90	Prefilled Formalin Container, Formalock™, 90 mL (1/2 filled), bulk	12/pack, 20 packs/case (240)
PFNBF-120	Prefilled Formalin Container, Formalock™, 120 mL (1/2 filled)	24/pack, 2 packs/case (48)
B-PFNBF120	Prefilled Formalin Container, Formalock™, 120 mL (1/2 filled), bulk	24/pack, 8 packs/case (192)

Large Prefilled Formalin Containers

Our large prefilled formalin containers are designed for collection of large tissue specimens. Each container is half-filled with 10% neutral buffered formalin. Our 180 mL-1000 mL containers feature a heat seal to prevent leakage during shipping.

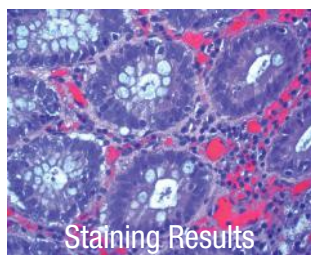
Cat. No.	Description	UOM
PFNBF-180	Prefilled Formalin Container, 180 mL (1/2 filled)	50/case
PFNBF-240	Prefilled Formalin Container, 240 mL (1/2 filled)	24/case
PFNBF-360	Prefilled Formalin Container, 360 mL (1/2 filled)	24/case
PFNBF-480	Prefilled Formalin Container, 480 mL (1/2 filled)	24/case
PFNBF-1000	Prefilled Formalin Container, 1000 mL (1/2 filled)	12/case
PFNBF-0.6G	Prefilled Formalin Container, 0.6 gallon (1/2 filled)	Each
PFNBF-1.25G	Prefilled Formalin Container, 1.25 gallon (1/2 filled)	Each
PFNBF-3840	Prefilled Formalin Container, 3840 mL paint can (1/2 filled)	4/case



Formagel®

Our prefilled Formagel® containers revolutionize tissue transportation. This advanced tissue fixation gel of 10% neutral buffered formalin allows for preservation and fixation of tissue samples without worrying about leaks or spills.

- Reduces risk to personnel during transport
- Fixation results identical to 10% neutral buffered formalin
- Decreases safety concerns while maintaining specimen integrity
- Excellent staining results with routine, special, and IHC staining



Staining Results

Cat. No.	Description	UOM
PFG-20	Formagel®, 20 mL (1/2 filled)	128/case
PFG-40	Formagel®, 40 mL (1/2 filled)	48/case
PFG-60	Formagel®, 60 mL (1/2 filled)	54/case
PFG-90	Formagel®, 90 mL (1/2 filled)	48/case

Prostate Biopsy Kits

- Packaged ready-to-use with eight, twelve, or sixteen 20 mL Formalock™ containers
- Each container is half-filled with 10% neutral buffered formalin
- Each kit contains an insert pre-labeled with the appropriate section of the prostate



Cat. No.	Description	UOM
10-831	Prostate Biopsy Kit, 8 place	25 kits/case
10-820	Prostate Biopsy Kit, 12 place	25 kits/case
10-816	Prostate Biopsy Kit, 16 place	25 kits/case

Ask about our custom labeling
and kitting options!

Unifrost® Thermal Printer Slides are available plain and with a clipped corner. They are compatible with popular slide printers. Check out **Page 20** for all available options!



Unifrost TH



Prefilled Zinc Formalin

Our zinc formalin promotes excellent H&E staining and enhances immunochemistry results.

- Ideal for all tissue types
- Enhances nuclear and cytoplasmic fixation
- Non-coagulant quality of formalin
- Coagulant fixative quality provided by zinc

Cat. No.	Description	UOM
PFZF-020	Zinc Formalin, 20 mL prefill	128/case
B-PFZF-020	Zinc Formalin, 20 mL prefill, bulk	768/case
PFZF-040	Zinc Formalin, 40 mL prefill	48/case
PFZF-060	Zinc Formalin, 60 mL prefill	54/case
PFZF-090	Zinc Formalin, 90 mL prefill	48/case
PFZF-120	Zinc Formalin, 120 mL prefill	48/case
PFZF-180	Zinc Formalin, 180 mL prefill	50/case

Prefilled Bouin's Fixative

This solution is a saturated picric acid solution that is useful for preserving delicate tissues and gastrointestinal tract specimens.



Cat. No.	Description	UOM
PFB-020	Bouin's Fixative, 20 mL prefill	128/case
PFB-040	Bouin's Fixative, 40 mL prefill	48/case
PFB-060	Bouin's Fixative, 60 mL prefill	54/case
PFB-090	Bouin's Fixative, 90 mL prefill	48/case
PFB-120	Bouin's Fixative, 120 mL prefill	48/case

Prefilled EasyFix™ Alcoholic Formalin

Our alcoholic formalin is designed for tissues that may be more difficult to fix, such as fatty tissues, breast, and colon.

Cat. No.	Description	UOM
PFAF-20	EasyFix™ Alcoholic Formalin, 20 mL prefill	128/case
PFAF-40	EasyFix™ Alcoholic Formalin, 40 mL prefill	48/case

Prefilled Alcohol

Prefilled reagent grade alcohol in varied concentration and fill volumes offer flexibility for the collection and transport of cytology specimens. Our 120 mL container is prefilled with 100 mL 95% reagent alcohol, ideal for FNA or other small volume collections. The 90 mL collection container is supplied with 50 mL of 50% reagent alcohol.

Cat. No.	Description	UOM
ES787	95% Reagent Grade Alcohol, 120 mL prefill, green cap	48/case
ES788	50% Reagent Grade Alcohol, 90 mL prefill, yellow cap	48/case
ES788W	50% Reagent Grade Alcohol, 90 mL prefill, white cap	48/case

Prefilled Hollande's Fixative

Recommended for gastrointestinal tract specimens and fixation of endocrine tissues. Hollande's fixative will produce less lysis than Bouin's and has some decalcifying properties.

Cat. No.	Description	UOM
PFHF-20	Hollande's Fixative, 20 mL prefill	128/case
B-PFHF-60	Hollande's Fixative, 60 mL prefill, bulk	324/case

Prefilled Michel's Transport Medium

Michel's Transport Medium is prepared for the transport of fresh, unfixed tissues submitted for frozen sectioning and immunofluorescent testing.

Cat. No.	Description	UOM
ES3270	Michel's Transport Medium, 20 mL prefill	128/case

Customization Options

Don't see what you are looking for here? We are able to customize your prefilled containers with your choice of fixative, container size, and label. Contact us to learn more!

Empty Formalock™ Containers

Our empty Formalock™ containers are available in sizes ranging from 20 mL to 120 mL.

- Polypropylene containers with polyethylene screw caps
- Containers are 95 kPa compliant and safe for pneumatic tube systems
- Our 20 mL - 120 mL containers feature our Formalock™ closure; two clicks ensure the seal is fully engaged for safe collection and transport of specimen

Cat. No.	Description	UOM
PFNBF-20EML	Empty Formalock™ Container, 20 mL	200/case
PFNBF-40EML	Empty Formalock™ Container, 40 mL	200/case
PFNBF-60EML	Empty Formalock™ Container, 60 mL	200/case
PFNBF-90EML	Empty Formalock™ Container, 90 mL	200/case
PFNBF-120EML	Empty Formalock™ Container, 120 mL	200/case



Snap Top Pathology Containers

- Manufactured from translucent, high-density polyethylene and natural polypropylene
- Sturdy, light-weight, and shatter resistant
- Excellent resistance to histology fixatives
- Snap-on lid creates a secure seal



Cat. No.	Description	UOM
ES3700	Snap Top Pathology Container, 4 oz., HDPE	250/case
ES3701	Snap Top Pathology Container, 8 oz., PP	250/case
ES3702	Snap Top Pathology Container, 16 oz., PP	100/case
ES3703	Snap Top Pathology Container, 32 oz., HDPE	100/case
ES3704	Snap Top Pathology Container, 64 oz., HDPE	50/case
ES3705	Snap Top Pathology Container, 85 oz., PP	25/case
ES3706	Snap top pathology container, 165 oz., HDPE	25/case

Screw Top Pathology Containers

- Manufactured from high-quality, clarified polypropylene
- Screw top lid provides a leak-resistant closure to help protect specimen and increase safety of lab personnel
- Excellent resistance to histology reagents



Cat. No.	Description	Height	Diameter	UOM
ES60120	Screw Top Pathology Container, 4 oz.	2.25"	2.625"	50/case
ES60180	Screw Top Pathology Container, 6 oz.	2.75"	2.625"	50/case
ES60240	Screw Top Pathology Container, 8 oz.	3.375"	2.625"	24/case
ES60360	Screw Top Pathology Container, 12 oz.	3.0"	3.375"	24/case
ES60480	Screw Top Pathology Container, 16 oz.	4.0"	3.375"	24/case
ES61000	Screw Top Pathology Container, 32 oz.	3.75"	4.5"	12/case

Large Screw Top Pathology Containers

- Manufactured from high-quality, high-density polyethylene
- Includes heavy-duty screw cap lid
- Moisture and tamper resistant
- Each container has a securely attached handle for carrying



Cat. No.	Description	UOM
MM100	Large Screw Top Pathology Container, 0.6 gallon	12/case
MM200	Large Screw Top Pathology Container, 1.25 gallon	12/case
MM350	Large Screw Top Pathology Container, 3.5 gallon	4/case
MM500	Large Screw Top Pathology Container, 5 gallon	4/case

Biohazard Bags

- 3 wall reclosable biohazard transport bags
- Feature separate sections for specimen and for paperwork



Cat. No.	Description	UOM
ESB6X9	Biohazard bag, 6" x 9"	1000/case
ESB6X9-AP	Biohazard bag, 6" x 9" with 3" x 5" absorbent pad	1000/case
ESB8X10	Biohazard bag, 8" x 10"	1000/case
ESB12X15	Biohazard bag, 12" x 15"	1000/case

Customize biohazard bags with your lab's logo and contact information!

Contact your sales representative for more details.



FormaPad™

Azer Scientific's FormaPad™ is designed for formalin absorption while grossing.

- Provides an excellent grossing surface
- Specially designed to prevent dulling of blades
- Pads absorb formalin and glutaraldehyde, as well as neutralize the hazardous vapors



Cat. No.	Description	UOM
ES86672	FormaPad™, 8" x 11"	100/case
ES86673	FormaPad™, 11" x 15"	100/case

Formalin Absorbent Pads

Azer Scientific's formalin absorbent pads are specially treated for the destruction of formaldehyde, 10% Neutral Buffered Formalin, and glutaraldehyde solutions. The pads also work to eliminate any chemically hazardous vapors. Available in sheet (roll) or pad styles.



Cat. No.	Description	UOM
ES728	Blue Sheet Pad, 11" x 10", 55 sheets per roll	6 rolls/case
ES729	White Pad, 6" x 14"	48/case
ES730	White Pad, 9" x 21"	30/case

Gauze

Our gauze is 8 ply, 4" x 4" pieces.

Packaging: 200/pack, 20 packs/case

Cat. No.	Description	UOM
ES8P44	Gauze, 8 ply, 4" x 4"	4000/case



FormaPad™ Select

Azer Scientific's FormaPad™ Select is designed for formalin absorption while grossing.

- Provides an excellent grossing surface
- Permeable, non-woven blue laminate material to use as a work surface
- Provides a dark contrast background for smaller biopsy specimens
- Pads absorb formalin and glutaraldehyde, as well as neutralize the hazardous vapors



Cat. No.	Description	UOM
ES86675	FormaPad™ Select, 8" x 11"	100/case
ES86676	FormaPad™ Select, 11" x 15"	100/case

Azer Lab Wipes

- Low lint, heavy-duty, air-layered material
- For use as an absorbent work surface for cover slipping or general lab clean up
- Each wipe measures 12.5" x 13"
- 1/4 fold packaged in packs of 50



Cat. No.	Description	UOM
ES3900	Azer Lab Wipes	900/case

Forceps

Stainless steel forceps: 4 1/2" or 5 1/2" length, with straight or curved tip

Plastic forceps: 5" length, with serrated tip



Cat. No.	Description	UOM
ES3162	Stainless Steel Forceps, 4 1/2", straight tip	Each
ES4470	Stainless Steel Forceps, 4 1/2", curved serrated tip	Each
ES3161	Plastic Forceps, 5", blue, serrated tip	500/case
ES4471	Stainless Steel Forceps, 5 1/2", straight serrated tip	Each

Pathology Grossing Boards

Features printed measurement guides printed onto board

- Made of heavy-duty, stain-resistant, thick polyethylene
- Will not dull fine surgical blades
- Features a drain groove to contain fluids



Cat. No.	Description	UOM
ES3913	Grossing Board, 13" x 11"	Each
ES3917	Grossing Board, 23" x 16"	Each

Disposable Cutting Boards

- Printed with imperial and metric scales (in, cm, mm)
- Features seven dimensional circles
- Surface will not dull blades
- Made from a flexible copolymer resin
- Common oils, solvents and water will not effect performance of board at normal temperatures



Cat. No.	Description	UOM
ES32496	Disposable Cutting Board, 6 x 8"	96/case
ES32497	Disposable Cutting Board, 9 x 12"	48/case
ES32498	Disposable Cutting Board, 12 x 19"	24/case

Disposable Scalpels

Our disposable scalpels are manufactured with a high carbon steel blade and plastic handle. Individually wrapped and sterilized with gamma radiation.



Cat. No.	Description	UOM
ES3244	Disposable Scalpel, size #10	10/box, 50 boxes/case
ES3245	Disposable Scalpel, size #11	10/box, 50 boxes/case
ES3246	Disposable Scalpel, size #15	10/box, 50 boxes/case
ES3247	Disposable Scalpel, size #20	10/box, 50 boxes/case
ES3248	Disposable Scalpel, size #22	10/box, 50 boxes/case

Tissue Marking Dyes

Azer Scientific's tissue marking dye is the ideal choice for marking margins, processing multiple sections, and marking areas of interest on tissue samples.

- Tissue marking dye kit include 2 oz. bottles of each color dye, a base, and applicator sticks
- Available individually in 2 oz. and 8 oz. bottles
- **Colors:** black, blue, green, orange, red, violet, yellow

Color	2 oz.	8 oz.	UOM
Black	ESTMD-2BK	ESTMD-8BK	Each
Blue	ESTMD-2B	ESTMD-8B	Each
Green	ESTMD-2GN	ESTMD-8GN	Each
Orange	ESTMD-2O	ESTMD-8O	Each
Red	ESTMD-2R	ESTMD-8R	Each
Violet	ESTMD-2V	ESTMD-8V	Each
Yellow	ESTMD-2Y	ESTMD-8Y	Each

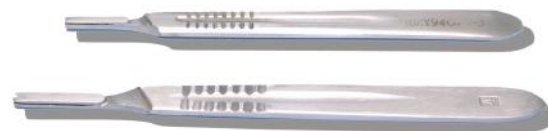
Tissue Marking Kit



Cat. No.	Description	UOM
ESTMD-K	Tissue Marking Dye Kit	Each
ESTMD-BASE	Base for 2 oz. Marking Dyes	Each
ESTMD-STK	Applicator Sticks	100/pack

Scalpel Handles

- Made from stainless steel
- Will accept #10-12, #15, and #20-25 scalpel blades



Cat. No.	Description	UOM
ES3242	#3 Handle, accepts blades #10-12, 15	Each
ES3243	#4 Handle, accepts blades #20-25	Each



Scalpel Blades

- Made from high carbon steel
- Individually foil wrapped and sterilized by gamma radiation (Exception: ESBL0207)

Cat. No.	Description	UOM
ES3232	Scalpel Blade, size #10	100/box, 50 boxes/case
ES3233	Scalpel Blade, size #11	100/box, 50 boxes/case
ES3234	Scalpel Blade, size #12	100/box, 50 boxes/case
ES3235	Scalpel Blade, size #15	100/box, 50 boxes/case
ES3236	Scalpel Blade, size #20	100/box, 50 boxes/case
ES3237	Scalpel Blade, size #21	100/box, 50 boxes/case
ES3238	Scalpel Blade, size #22	100/box, 50 boxes/case
ES3239	Scalpel Blade, size #23	100/box, 50 boxes/case
ES3240	Scalpel Blade, size #24	100/box, 50 boxes/case
ES3241	Scalpel Blade, size #25	100/box, 50 boxes/case

Cat. No.	Description	UOM
ESBL0207	Scalpel Blade size #70, non-sterile	100/box

Scalpel Blade Remover

- The scalpel blade remover is simple to use with a quick, single-handed "push, click, and pull" action to remove and contain used scalpel blades
- Holds up to 100 blades
- Compatible with blades up to #25, and #3, 4, 5, 7, and 9 handles



Cat. No.	Description	UOM
ES4482	Scalpel Blade Remover	Each
ES4482-M	Mounting Bracket for Scalpel Blade Remover	Each

Biopsy Bags

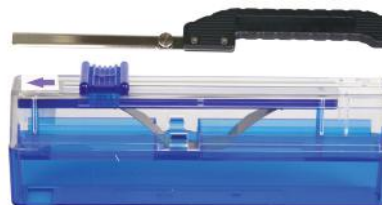
Our nylon and "tea bag" biopsy bags help to reduce the risk of small specimen loss. The design allows for unrestricted fluid movement around tissue and can be opened easily for specimen removal.



Cat. No.	Description	UOM
ES3348	Nylon Biopsy Bag, small, 30 x 50 mm	1000/case
ES3349	Nylon Biopsy Bag, medium, 45 x 75 mm	200/case
ES3350	Nylon Biopsy Bag, large, 75 x 95 mm	500/case
ES33511	Tea Bag, small, 2.5" x 2.75"	200/case
ES33513	Tea Bag, large, 4" x 5"	200/case

Trimming Blades and Handle

- Ideal for sectioning hard tissues, mammary gland tissue, soft or semi-fixed organs, and other organs
- Trimming blades are made of stainless steel
- Trimming blades are durable and disposable
- Easy to attach handle



Cat. No.	Description	UOM
ES32452	Trimming Blade Handle for 130 mm blades	Each
ES32456	Trimming blade Handle for 260 mm blades	Each
ES32451	Trimming blades, 130 mm	50/pack
ES32455	Trimming blades, 260 mm	50/pack

Valor 2000® Compact Bench Scale

- Stainless steel construction
- Safe to use in the weighing of liquid and in wet environments
- AC adapter and rechargeable battery included
- Maximum Capacity: 30 kg
- Platform Size (LxW): 7.5 in x 9.5 in
- Dimensions (HxLxW): 4.9 in x 10.1 in x 11.3 in



Cat. No.	Description	UOM
ES59162-XW30KG	Valor® 2000 Compact Bench Scale, 30 kg	Each

Defender® 3000 Bench Scale

- Ideal for general weighing when working in a damp environment or when it is essential to thoroughly clean the scale
- Made of stainless steel with 4X/IP66 stainless steel indicator with tactile keys, LCD display, and built-in rechargeable battery
- Maximum Capacity: 60 kg
- Platform Size (LxW): 14 in x 12 in
- Dimensions (HxLxW): 22.5 in x 18.6 in x 12 in



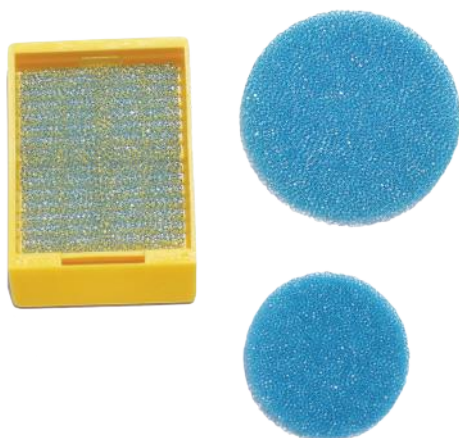
Cat. No.	Description	UOM
ES59167-VR60KG	Defender® 3000 Bench Scale, 60 kg	Each

Valor® and Defender® are registered trademarks of OHAUS Corporation.

Biopsy Pads

Used to hold biopsies in place and to prevent the specimen from drifting during processing.

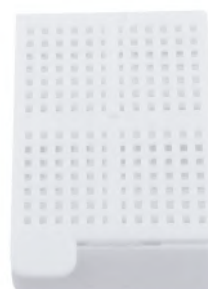
- Made of polyester urethane foam
- Verified for consistency throughout to achieve optimum solvent flow
- Will resist temperatures from -40°C to 121°C



Cat. No.	Description	UOM
ES3057	Biopsy Pad, 30.2 x 25.4 x 2 mm, blue	10,000/case
ES3057-BLK	Biopsy Pad, 30.2 x 25.4 x 2 mm, black	1000/pack
ES3058	Biopsy Pad (round), 25.4 x 2.7 mm, blue	10,000/case
ES3059	Biopsy Pad (round), 34.55 x 2 mm, blue	10,000/case

Two Piece Economy Cassette (Tissue & Biopsy)

- Molded from a high-density polymer resistant to the chemical actions of solvents
- Lids can be snapped on and off as often as necessary
- Lids relock without danger of specimen loss
- Large labeling areas located on three sides of the cassette



Cat. No.	Description	UOM
ES3013-W	Tissue Cassette, white	500/case
ES3014-W	Biopsy Cassette, white	500/case

One-Piece Cassette (Tissue & Biopsy, Bulk & Taped)

- Molded from a special high-density polymer resistant to histology solvents
- Snap-latch and hinge-lock design prevents early separation of base and lid
- Features a front tab for easy handling of cassette
- Three frosted writing areas; including the anterior surface at a 35° angle
- Available taped in an open position for use in automated systems



Description	Bulk Cat No.	UOM	Taped Cat No.	UOM	Description	Bulk Cat No.	UOM	Taped Cat No.	UOM
Tissue Cassette, aqua	ES6010-A	1500/case	ES6012-A	1000/case	Biopsy Cassette, aqua	ES6011-A	1500/case	ES6013-A	1000/case
Tissue Cassette, blue	ES6010-B	1500/case	ES6012-B	1000/case	Biopsy Cassette, blue	ES6011-B	1500/case	ES6013-B	1000/case
Tissue Cassette, green	ES6010-G	1500/case	ES6012-G	1000/case	Biopsy Cassette, green	ES6011-G	1500/case	ES6013-G	1000/case
Tissue Cassette, gray	ES6010-GY	1500/case	ES6012-GY	1000/case	Biopsy Cassette, gray	ES6011-GY	1500/case	ES6013-GY	1000/case
Tissue Cassette, lilac	ES6010-L	1500/case	ES6012-L	1000/case	Biopsy Cassette, lilac	ES6011-L	1500/case	ES6013-L	1000/case
Tissue Cassette, orange	ES6010-O	1500/case	ES6012-O	1000/case	Biopsy Cassette, orange	ES6011-O	1500/case	ES6013-O	1000/case
Tissue Cassette, pink	ES6010-P	1500/case	ES6012-P	1000/case	Biopsy Cassette, pink	ES6011-P	1500/case	ES6013-P	1000/case
Tissue Cassette, peach	ES6010-PH	1500/case	ES6012-PH	1000/case	Biopsy Cassette, peach	ES6011-PH	1500/case	ES6013-PH	1000/case
Tissue Cassette, tan	ES6010-T	1500/case	ES6012-T	1000/case	Biopsy Cassette, tan	ES6011-T	1500/case	ES6013-T	1000/case
Tissue Cassette, white	ES6010-W	1500/case	ES6012-W	1000/case	Biopsy Cassette, white	ES6011-W	1500/case	ES6013-W	1000/case
Tissue Cassette, yellow	ES6010-Y	1500/case	ES6012-Y	1000/case	Biopsy Cassette, yellow	ES6011-Y	1500/case	ES6013-Y	1000/case

Cassette Color Guide





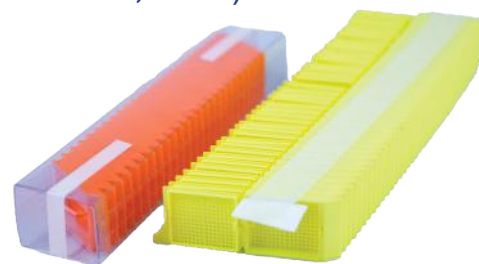
Hinged Tissue, Biopsy, and Mesh Cassettes (Taped, Sleeved, Bulk)

- Molded from a special high-density polymer resistant to histology solvents
- Unique recessed lid allows for more cassettes to be stacked in automated systems and in storage
- Hinged at front of cassette
- Features a back tab for easy handling of cassette
- Three frosted writing surfaces including the anterior surface at a 45° angle

Bulk Cases: 500/box (3 boxes/case), or 250/box (4 boxes/case) for mesh

Taped for Automated Labelers: 40/stack, 50 stacks/case

Sleeve for Automated Labelers: 75/tube, 10 tubes/case



Description	Bulk Cat No.	Bulk UOM	Taped Cat. No.	Taped UOM	Sleeved Cat. No.	Sleeved UOM
Tissue Cassette, aqua	ES3336-A	1500/case	ES6015-A	2000/case	ES3015-A	750/case
Tissue Cassette, blue	ES3336-B	1500/case	ES6015-B	2000/case	ES3015-B	750/case
Tissue Cassette, green	ES3336-G	1500/case	ES6015-G	2000/case	ES3015-G	750/case
Tissue Cassette, gray	ES3336-GY	1500/case	ES6015-GY	2000/case	ES3015-GY	750/case
Tissue Cassette, lilac	ES3336-L	1500/case	ES6015-L	2000/case	ES3015-L	750/case
Tissue Cassette, orange	ES3336-O	1500/case	ES6015-O	2000/case	ES3015-O	750/case
Tissue Cassette, pink	ES3336-P	1500/case	ES6015-P	2000/case	ES3015-P	750/case
Tissue Cassette, peach	ES3336-PH	1500/case	ES6015-PH	2000/case	ES3015-PH	750/case
Tissue Cassette, tan	ES3336-T	1500/case	ES6015-T	2000/case	ES3015-T	750/case
Tissue Cassette, white	ES3336-W	1500/case	ES6015-W	2000/case	ES3015-W	750/case
Tissue Cassette, yellow	ES3336-Y	1500/case	ES6015-Y	2000/case	ES3015-Y	750/case



Description	Bulk Cat No.	Bulk UOM	Taped Cat. No.	Taped UOM	Sleeved Cat. No.	Sleeved UOM
Biopsy Cassette, aqua	ES3406-A	1500/case	ES6016-A	2000/case	ES3016-A	750/case
Biopsy Cassette, blue	ES3406-B	1500/case	ES6016-B	2000/case	ES3016-B	750/case
Biopsy Cassette, green	ES3406-G	1500/case	ES6016-G	2000/case	ES3016-G	750/case
Biopsy Cassette, gray	ES3406-GY	1500/case	ES6016-GY	2000/case	ES3016-GY	750/case
Biopsy Cassette, lilac	ES3406-L	1500/case	ES6016-L	2000/case	ES3016-L	750/case
Biopsy Cassette, orange	ES3406-O	1500/case	ES6016-O	2000/case	ES3016-O	750/case
Biopsy Cassette, pink	ES3406-P	1500/case	ES6016-P	2000/case	ES3016-P	750/case
Biopsy Cassette, peach	ES3406-PH	1500/case	ES6016-PH	2000/case	ES3016-PH	750/case
Biopsy Cassette, tan	ES3406-T	1500/case	ES6016-T	2000/case	ES3016-T	750/case
Biopsy Cassette, white	ES3406-W	1500/case	ES6016-W	2000/case	ES3016-W	750/case
Biopsy Cassette, yellow	ES3406-Y	1500/case	ES6016-Y	2000/case	ES3016-Y	750/case



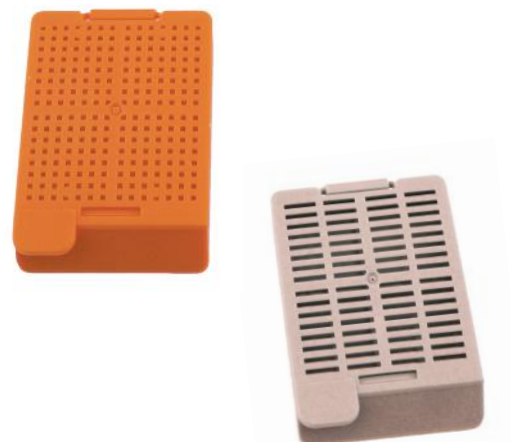
Description	Bulk Cat No.	Bulk UOM	Taped Cat. No.	Taped UOM	Sleeved Cat. No.	Sleeved UOM
Mesh Cassette, aqua	ES3335-A	1000/case	ES6014-A	2000/case	ES3017-A	750/case
Mesh Cassette, blue	ES3335-B	1000/case	ES6014-B	2000/case	ES3017-B	750/case
Mesh Cassette, green	ES3335-G	1000/case	ES6014-G	2000/case	ES3017-G	750/case
Mesh Cassette, gray	ES3335-GY	1000/case	ES6014-GY	2000/case	ES3017-GY	750/case
Mesh Cassette, lilac	ES3335-L	1000/case	ES6014-L	2000/case	ES3017-L	750/case
Mesh Cassette, orange	ES3335-O	1000/case	ES6014-O	2000/case	ES3017-O	750/case
Mesh Cassette, pink	ES3335-P	1000/case	ES6014-P	2000/case	ES3017-P	750/case
Mesh Cassette, peach	ES3335-PH	1000/case	ES6014-PH	2000/case	ES3017-PH	750/case
Mesh Cassette, tan	ES3335-T	1000/case	ES6014-T	2000/case	ES3017-T	750/case
Mesh Cassette, white	ES3335-W	1000/case	ES6014-W	2000/case	ES3017-W	750/case
Mesh Cassette, yellow	ES3335-Y	1000/case	ES6014-Y	2000/case	ES3017-Y	750/case



Hinged Tissue and Biopsy Cassette

- Molded from a special high-density polymer resistant to histology solvents
- Hinged at back of cassette
- Features a front tab for easy handling of cassette
- Three frosted writing surfaces including the anterior surface at a 45° angle

Description	Tissue Cat No.	UOM	Biopsy Cat No.	UOM
Hinged Cassette, aqua	ES3018-A	1500/case	ES3407-A	1500/case
Hinged Cassette, blue	ES3018-B	1500/case	ES3407-B	1500/case
Hinged Cassette, green	ES3018-G	1500/case	ES3407-G	1500/case
Hinged Cassette, gray	ES3018-GY	1500/case	ES3407-GY	1500/case
Hinged Cassette, lilac	ES3018-L	1500/case	ES3407-L	1500/case
Hinged Cassette, orange	ES3018-O	1500/case	ES3407-O	1500/case
Hinged Cassette, pink	ES3018-P	1500/case	ES3407-P	1500/case
Hinged Cassette, peach	ES3018-PH	1500/case	ES3407-PH	1500/case
Hinged Cassette, tan	ES3018-T	1500/case	ES3407-T	1500/case
Hinged Cassette, white	ES3018-W	1500/case	ES3407-W	1500/case
Hinged Cassette, yellow	ES3018-Y	1500/case	ES3407-Y	1500/case



Hinged Cassette with Separate Lid (Tissue & Biopsy)

- Molded from a special high-density polymer resistant to histology solvents
- Hinged at back of cassette with lids packaged separately
- Features a front tab for easy handling of cassette
- Three frosted writing surfaces including the anterior surface at a 45° angle

Description	Bulk Cat No.	UOM	Sleeve Cat No.	UOM
Hinged Biopsy, Lid Separate, aqua	ES6034-A	1000/case	ES6037-A	750/case
Hinged Biopsy, Lid Separate, blue	ES6034-B	1000/case	ES6037-B	750/case
Hinged Biopsy, Lid Separate, green	ES6034-G	1000/case	ES6037-G	750/case
Hinged Biopsy, Lid Separate, gray	ES6034-GY	1000/case	ES6037-GY	750/case
Hinged Biopsy, Lid Separate, lilac	ES6034-L	1000/case	ES6037-L	750/case
Hinged Biopsy, Lid Separate, orange	ES6034-O	1000/case	ES6037-O	750/case
Hinged Biopsy, Lid Separate, pink	ES6034-P	1000/case	ES6037-P	750/case
Hinged Biopsy, Lid Separate, peach	ES6034-PH	1000/case	ES6037-PH	750/case
Hinged Biopsy, Lid Separate, tan	ES6034-T	1000/case	ES6037-T	750/case
Hinged Biopsy, Lid Separate, white	ES6034-W	1000/case	ES6037-W	750/case
Hinged Biopsy, Lid Separate, yellow	ES6034-Y	1000/case	ES6037-Y	750/case

Description	Bulk Cat No.	UOM	Sleeve Cat No.	UOM
Hinged Tissue, Lid Separate, aqua	ES6053-A	1000/case	ES6036-A	750/case
Hinged Tissue, Lid Separate, blue	ES6053-B	1000/case	ES6036-B	750/case
Hinged Tissue, Lid Separate, green	ES6053-G	1000/case	ES6036-G	750/case
Hinged Tissue, Lid Separate, gray	ES6053-GY	1000/case	ES6036-GY	750/case
Hinged Tissue, Lid Separate, lilac	ES6053-L	1000/case	ES6036-L	750/case
Hinged Tissue, Lid Separate, orange	ES6053-O	1000/case	ES6036-O	750/case
Hinged Tissue, Lid Separate, pink	ES6053-P	1000/case	ES6036-P	750/case
Hinged Tissue, Lid Separate, peach	ES6053-PH	1000/case	ES6036-PH	750/case
Hinged Tissue, Lid Separate, tan	ES6053-T	1000/case	ES6036-T	750/case
Hinged Tissue, Lid Separate, white	ES6053-W	1000/case	ES6036-W	750/case
Hinged Tissue, Lid Separate, yellow	ES6053-Y	1000/case	ES6036-Y	750/case



Cassette Color Guide





Hinged Tissue and Biopsy Cassette with Separate Lid (Taped, Bulk, Sleeve)

- Molded from a special high-density polymer resistant to histology solvents
- Special hinge that allows cassettes to be opened and closed as often as necessary with lids packaged separately
- Three frosted writing surfaces including the anterior surface at a 45° angle

Description	Bulk Cat No.	UOM	Sleeve Cat No.	UOM	Taped Cat. No.	UOM
Tissue Cassette, Lid Separate, aqua	ES6041-A	1000/case	ES6022-A	750/case	ES6047-A	2000
Tissue Cassette, Lid Separate, blue	ES6041-B	1000/case	ES6022-B	750/case	ES6047-B	2000
Tissue Cassette, Lid Separate, green	ES6041-G	1000/case	ES6022-G	750/case	ES6047-G	2000
Tissue Cassette, Lid Separate, gray	ES6041-GY	1000/case	ES6022-GY	750/case	ES6047-GY	2000
Tissue Cassette, Lid Separate, lilac	ES6041-L	1000/case	ES6022-L	750/case	ES6047-L	2000
Tissue Cassette, Lid Separate, orange	ES6041-O	1000/case	ES6022-O	750/case	ES6047-O	2000
Tissue Cassette, Lid Separate, pink	ES6041-P	1000/case	ES6022-P	750/case	ES6047-P	2000
Tissue Cassette, Lid Separate, peach	ES6041-PH	1000/case	ES6022-PH	750/case	ES6047-PH	2000
Tissue Cassette, Lid Separate, tan	ES6041-T	1000/case	ES6022-T	750/case	ES6047-T	2000
Tissue Cassette, Lid Separate, white	ES6041-W	1000/case	ES6022-W	750/case	ES6047-W	2000
Tissue Cassette, Lid Separate, yellow	ES6041-Y	1000/case	ES6022-Y	750/case	ES6047-Y	2000

Description	Bulk Cat No.	UOM	Sleeve Cat No.	UOM	Taped Cat. No.	UOM
Biopsy Cassette, Lid Separate, aqua	ES6042-A	1000/case	ES6023-A	750/case	ES6048-A	2000
Biopsy Cassette, Lid Separate, blue	ES6042-B	1000/case	ES6023-B	750/case	ES6048-B	2000
Biopsy Cassette, Lid Separate, green	ES6042-G	1000/case	ES6023-G	750/case	ES6048-G	2000
Biopsy Cassette, Lid Separate, gray	ES6042-GY	1000/case	ES6023-GY	750/case	ES6048-GY	2000
Biopsy Cassette, Lid Separate, lilac	ES6042-L	1000/case	ES6023-L	750/case	ES6048-L	2000
Biopsy Cassette, Lid Separate, orange	ES6042-O	1000/case	ES6023-O	750/case	ES6048-O	2000
Biopsy Cassette, Lid Separate, pink	ES6042-P	1000/case	ES6023-P	750/case	ES6048-P	2000
Biopsy Cassette, Lid Separate, peach	ES6042-PH	1000/case	ES6023-PH	750/case	ES6048-PH	2000
Biopsy Cassette, Lid Separate, tan	ES6042-T	1000/case	ES6023-T	750/case	ES6048-T	2000
Biopsy Cassette, Lid Separate, white	ES6042-W	1000/case	ES6023-W	750/case	ES6048-W	2000
Biopsy Cassette, Lid Separate, yellow	ES6042-Y	1000/case	ES6023-Y	750/case	ES6048-Y	2000



Embedding Cassette with Metal Lid

Disposable cassettes with metal lids (sold separately) are suitable for holding and identifying tissue samples during processing, embedding, and sectioning procedures.

- Specially designed for use with our metal lid (ES6019-LID)
- Large anterior labeling area at a 45° angle
- Fits securely in microtome chuck adapter



Cat. No.	Description	UOM
ES6019-A	Embedding Cassette (no lid), aqua	1500/case
ES6019-B	Embedding Cassette (no lid), blue	1500/case
ES6019-G	Embedding Cassette (no lid), green	1500/case
ES6019-GY	Embedding Cassette (no lid), gray	1500/case
ES6019-L	Embedding Cassette (no lid), lilac	1500/case
ES6019-O	Embedding Cassette (no lid), orange	1500/case
ES6019-P	Embedding Cassette (no lid), pink	1500/case
ES6019-PH	Embedding Cassette (no lid), peach	1500/case
ES6019-T	Embedding Cassette (no lid), tan	1500/case
ES6019-W	Embedding Cassette (no lid), white	1500/case
ES6019-Y	Embedding Cassette (no lid), yellow	1500/case
ES6019-LID	Metal Lids for ES6019 Cassettes	25/pack

Cassette Color Guide



10% Neutral Buffered Formalin

This neutral buffered formalin fixative is ideal for a general purpose fixative for all tissues. The formulation is enhanced by buffering that optimizes results by light microscopy and immunohistochemistry.



Cat. No.	Description	UOM
NBF-4-G	10% Neutral Buffered Formalin, gallon	4 x 1 gallon/case
CUNBF-2.5G	10% Neutral Buffered Formalin, 2.5 gallon cube	Each
CUNBF-5-G	10% Neutral Buffered Formalin, 5 gallon cube	Each
NBF30G	10% Neutral Buffered Formalin, 30 gallon	Each
NBF55G	10% Neutral Buffered Formalin, 55 gallon drum	Each

EasyFix™ Alcoholic Formalin

Our alcoholic formalin is designed for tissues that may be more difficult to fix such as fatty tissues, breast, and colon.

Cat. No.	Description	UOM
ES784	EasyFix™ Alcoholic Formalin, gallon	4 x 1 gallon/case

Bouin's Fixative

This solution is a saturated picric acid solution that is useful for preserving delicate tissues and gastrointestinal tract specimens.

Cat. No.	Description	UOM
B-F-G	Bouin's Fixative, gallon	4 x 1 gallon/case
CUNB-2.5G	Bouin's Fixative, 2.5 gallon cube	Each
CUNB-5G	Bouin's Fixative, 5 gallon cube	Each

Hollande's Fixative

Recommended for gastrointestinal tract specimens and fixation of endocrine tissues. Hollande's fixative will produce less lysis than Bouin's and has some decalcifying properties.

Cat. No.	Description	UOM
HF-4-G	Hollande's Fixative, gallon	4 x 1 gallon/case

20% Neutral Buffered Formalin

20% neutral buffered formalin is designed for general fixation and is useful for surgical tissues and necropsy specimens.

Cat. No.	Description	UOM
20NBF-4-G	20% NB Formalin, gallon	4 x 1 gallon/case
20CUNBF5G	20% NB Formalin, 5 gallon cube	Each

Zinc Formalin

Our zinc formalin promotes excellent H&E staining and enhances immunochemistry results.

- Ideal for all tissue types
- Enhances nuclear and cytoplasmic fixation
- Non-coagulant quality of formalin
- Coagulant fixative quality provided by zinc

Cat. No.	Description	UOM
ZF-4-G	Zinc Formalin, gallon	4 x 1 gallon/case
CUNZF-2.5G	Zinc Formalin, 2.5 gallon cube	Each
CUNZF-5-G	Zinc Formalin, 5 gallon cube	Each

Blue Tinted Formalin

10% Neutral buffered formalin with a blue tint will slightly stain small biopsies making them easier to find after embedding in paraffin. The tint does not interfere with subsequent staining. Blue Tinted Formalin will also eliminate confusion with other clear chemicals or reagents such as DI Water or Reagent Alcohol that are also stored in the lab.

Cat. No.	Description	UOM
CUNBF-5-G-B	10% Neutral Buffered Formalin, blue tinted, 5 gallon cube	Each

Michel's Transport Medium

Michel's Transport Medium is prepared for the transport of fresh unfixed tissues submitted for frozen sectioning and immunofluorescent testing.

Cat. No.	Description	UOM
ES3271	Michel's Transport Medium, gallon	Each
ES3271-500	Michel's Transport Medium, 500 mL	Each

Azer-5 Fixative

Azer-5 Fixative is a B-5 substitute that provides equivalent cytological characteristics as in any B-5 fixation.

- Produces remarkable fixation for bone marrow, lymphoid tissue, and GI biopsies
- Contains formaldehyde and zinc
- Considered a true replacement for mercury-based fixatives

Cat. No.	Description	UOM
ES783	Azer-5 Fixative, 32 oz.	Each
ES782	Azer-5 Fixative, gallon	Each



37% Formaldehyde

37% formaldehyde is for use in the most critical applications in microscopy and histology. Our formula is stabilized with methanol.



Cat. No.	Description	UOM
F-37-32OZ	37% Formaldehyde, 32 oz.	12 x 32 oz./case
F-37-1G	37% Formaldehyde, gallon	4 x 1 gallon/case
F-37-5G	37% Formaldehyde, 5 gallon	Each
F-37-55G	37% Formaldehyde, 55 gallon	Each

AzerPrep Fixative

- Uniquely formulated tissue fixative rapidly dehydrates fatty tissue for efficient and complete lymph node recovery
- Suitable as a primary or secondary fixative

Cat. No.	Description	UOM
ES34055	AzerPrep fixative, gallon	4 x 1 gallon/case
ES34054	AzerPrep fixative, 2.5 gallon cube	Each
ES34056	AzerPrep fixative, 5 gallon cube	Each

Decalcifiers

Decalcifier with formic acid allows for simultaneous decalcification and fixation.

Decalcifier with hydrochloric acid is a more aggressive form of decalcifier.

Cat. No.	Description	UOM
ES732	Decalcifier, formic acid, 32 oz.	12 x 32 oz./case
ES731	Decalcifier, formic acid, gallon	4 x 1 gallon/case
ES731-5G	Decalcifier, formic acid, 5 gallon	Each
ES734	Decalcifier, hydrochloric acid, 32 oz.	12 x 32 oz./case
ES733	Decalcifier, hydrochloric acid, gallon	4 x 1 gallon/case
ES733-5G	Decalcifier, hydrochloric acid, 5 gallon	Each

Formalin Concentrate

Formalin concentrate provides an economical option for 10% neutral buffered formalin. Simply mix one part concentrate with four parts water for up to 5 gallons of 10% neutral buffered formalin. Formalin concentrate allows your lab to save on shipping costs and storage.

Cat. No.	Description	UOM
ES772	Formalin Concentrate, gallon	4 x 1 gallon/case
ES772-30G	Formalin Concentrate, 30 gallon drum	Each

Glacial Acetic Acid

Glacial acetic acid is a frequent component of tissue fixing solutions. Its efficient fixing action on the nucleus, as well as its rapid penetration, makes it an important part of good fixatives. It fixes the nucleoproteins, but not the proteins of the cytoplasm.

Cat. No.	Description	UOM
ES638-16	Glacial Acetic Acid, 16 oz.	Each
ES638-1G	Glacial Acetic Acid, gallon	Each

Potassium Hydroxide

- Used to soften nail clippings after fixation for histological evaluation
- Available in 10% and 30% concentration

Cat. No.	Description	UOM
ES660	Potassium Hydroxide (10%), 2 oz. dropper bottle	Each
ES619	Potassium Hydroxide (10%), 16 oz.	Each
ES619-30	Potassium Hydroxide (30%), 5 gallon cube	Each

All of Azer Scientific's fixative and reagent labels and Safety Data Sheets are updated with the new GHS requirements.

Have questions about the new GHS requirements?

Our technical support staff can help!
Contact us at **1.877.770.AZER**



Reagent Grade Alcohols

Our reagent grade alcohol is a denatured form of ethyl alcohol approved for sale under U.S. regulations.

- 90 parts ethyl alcohol, 5 parts methyl alcohol, and 5 parts isopropyl alcohol
- The preferred mixture for dehydrating tissue samples prior to embedding



Cat. No.	Description	UOM
ES631	Reagent Grade Alcohol, 100%, gallon	4 x 1 gallon/case
ES753	Reagent Grade Alcohol, 95%, gallon	4 x 1 gallon/case
ES750	Reagent Grade Alcohol, 80%, gallon	4 x 1 gallon/case
ES749	Reagent Grade Alcohol, 70%, gallon	4 x 1 gallon/case
ES748	Reagent Grade Alcohol, 50%, gallon	4 x 1 gallon/case

Xylene & Xylene Substitutes

Our **xylene** is designed for use as a clearing agent within the histology lab. Meets USP quality grade specifications. Azer's **Everclear Xylene Substitute** is a safe alternative to xylene. It can be used as a solvent and clearing agent, as well as for dissolving paraffin, waxes, glues, and adhesives.

D-Limonene is a safe, citrus-based alternative to xylene.



Cat. No.	Description	UOM
ES609	Xylene, gallon	4 x 1 gallon/case
ES657	Everclear, xylene substitute, gallon	4 x 1 gallon/case
ES34415	D-Limonene, gallon	4 x 1 gallon/case

EXCEL Alcohols

Azer's EXCEL alcohol is designed to prevent over-dehydration. The specially blended formula does not contain ethanol and is ideal for small specimens and biopsies.



Cat. No.	Description	UOM
ES653-95	EXCEL 95%, gallon	4 x 1 gallon/case
ES653-100	EXCEL 100%, gallon	4 x 1 gallon/case

Isopropyl & Methyl Alcohol

Isopropyl and methyl alcohols are ideal for specialty fixation and dehydration in the histology lab.

Cat. No.	Description	UOM
ES602	Isopropyl Alcohol, gallon	4 x 1 gallon/case
ES607	Methyl Alcohol, gallon	4 x 1 gallon/case

Laboratory Grade Water

We offer a selection of deionized water, high purity water, and reagent grade water for use in the histology lab.



Cat. No.	Description	UOM
ES616	Deionized Water, gallon	4 x 1 gallon/case
ES616-2.5G	Deionized Water, 2.5 gallon cube	Each
ES616-5G	Deionized Water, 5 gallon cube	Each
ES611	High Purity Water, gallon	4 x 1 gallon/case
ES612	High Purity Water, 5 gallon cube	Each
ES613	Reagent Grade Water, 32 oz.	12 x 32 oz./case
ES613-4G	Reagent Grade Water, gallon	4 x 1 gallon/case



AzerFin™ Embedding & Infiltration Paraffin

Azer Scientific's specially formulated paraffin blends will support a one or two paraffin system for tissue embedding and infiltration.

- Manufactured and designed to prevent residue from remaining in your paraffin heating system or embedding center
- Performs optimally with many sample types, from small specimens to hard tissue samples
- **AzerFin™** paraffin is designed for softer paraffin applications
- **AzerFin™ Advance** paraffin is designed for harder paraffin applications

Cat. No.	Description	UOM
ES34901	AzerFin™ Paraffin, 1 kg. bag	8/case
ES34903	AzerFin™ Advance Paraffin, 1 kg. bag	8/case



Metal Base Molds

- Features a flat bottom surface
- Excellent thermal conductivity
- "Winged" edge for easy handling
- Resists tipping
- Remains rust-free



Cat. No.	Description	UOM
ES4440	Metal Base Mold, 15 x 15 x 5 mm	12/case
ES4441	Metal Base Mold, 24 x 24 x 5 mm	12/case
ES4442	Metal Base Mold, 7 x 7 x 5 mm	12/case
ES4443	Metal Base Mold, 30 x 24 x 5 mm	12/case
ES4444	Metal Base Mold, 37 x 24 x 5 mm	12/case

Disposable Base Molds

- Specially formulated plastic material
- Provides excellent thermal exchange
- Packaging: 500 base molds/box



Cat. No.	Description	UOM
ES3052	Disposable Base Mold, 7 x 7 x 5 mm	1000/case
ES3053	Disposable Base Mold, 15 x 15 x 5 mm	1000/case
ES3054	Disposable Base Mold, 24 x 24 x 5 mm	1000/case
ES3055	Disposable Base Mold, 30 x 24 x 5 mm	1000/case
ES3056	Disposable Base Mold, 37 x 24 x 5 mm	1000/case

Paraffin Dispenser

- Tabletop style dispenser, 2.5 gallon capacity
- Built-in temperature controller
- Strong outer metal shell and a durable stainless steel interior
- Maximum temperature of 72°C



Cat. No.	Description	UOM
ES4570	Paraffin Dispenser	Each

Wax Trimmer

- Grooved surface to help remove and collect paraffin
- Ridges allow for collection and drainage of paraffin into the collection tray
- Lip prevents paraffin from running down the side
- Smooth metal surface allows the user to trim multiple cassettes at the same time



Cat. No.	Description	UOM
ES4571	Wax Trimmer	Each
ES4571-PB	Plastic Liner for Wax Tray	300/case

Universal Microtome Alignment Tool

- Compatible with all microtomes
- Built-in level allows for easy alignment of microtome
- Includes a case for easy storage and transport of tool
- For instructions for use, please contact us or visit our website



Cat. No.	Description	UOM
ES39493	Universal Microtome Alignment Tool	Each

Brush

Camel hair mounted on a wooden handle with metal ferrule. This brush is helpful for dusting sensitive instruments. Brush portion measures 3/4" x 1/2".



Cat. No.	Description	UOM
ES3199	Camel Hair Brush, wooden handle, 6.5"	12/case

Light Duty Task Wipes

- Low particulate, non-streak cleaning
- Extra absorbency performance
- Sensitive and delicate parts wiping
- Anti-static cover



Cat. No.	Description	UOM
ES86692	Azer light duty task wipes, small	280/box, 60 boxes/case
ES86694	Azer light duty task wipes, large	140/box, 15 boxes/case

Microtome Blades

Our microtome blades are designed for precise and exact sectioning of tissue specimens. The use of our sophisticated heating process and excellent polishing and coating techniques results in smooth, clean sections everytime. Available in high and low profile.



Cat. No.	Description	UOM
ES33670	Azer Microtome Blades, low profile	50/pack
ES33675	Azer Microtome Blades, high profile	50/pack

Rapid Freeze™

Azer Scientific's Rapid Freeze™ spray is used to instantly freeze tissue sections at the cryostat or to freeze tissue blocks at the microtome.

- Non-flammable and moisture-free
- Brings samples to -60°F in under three seconds
- Contains no CFC's or HFC's, and will not deplete stratospheric ozone
- Our proprietary **Rapid Zap** nozzle attachment is available for applications requiring greater precision



Cat. No.	Description	UOM
RAP-FRZ	Rapid Freeze™ tissue/block freezing spray, 10 oz.	12/case
RAP-ZAP	Applicator Nozzle for Rapid Freeze™	Each



AzerPath Lighted Tissue Floating Bath

- Sleek, easy-to-use design with a removable PYREX® rectangular glass basin
- The transparent basin with a dark background allows for clear viewing of specimens without a glare
- Precise temperature settings are operated utilizing buttons on the base of the device and are regulated by a digital microprocessor which ensures optimal temperature protection
- Temperature Range: ambient +5°C to 65°C



Cat. No.	Description	UOM
ES4551	Tissue Floating Bath	Each

Lighted Tissue Floating Bath

- Low profile design with a removable rectangular glass basin
- Features an easy to read LED display that shows set and actual temperatures
- Temperature Range: Room Temperature to 75°C (+/- 1°C)
- Tray Dimensions: 10" x 6" x 2"



Cat. No.	Description	UOM
ES3416	Lighted Tissue Floating Bath	Each

Slide Warmer

- Ideal for slides mounted with tissue sections
- Thermal heaters ensures even heat transfer across surface
- Anodized black surface provides contrast
- Features an LED temperature display
- Temperature Range: 75°C +/- 3°
- Dimensions: Small: 10.25" x 8" x 3"
Large: 25.5" x 9.5" x 4"



Cat. No.	Description	UOM
ES4572	Slide Warmer, small, 23 slide capacity	Each
ES4576	Slide Warmer, large, 66 slide capacity	Each

Tissue Floating Bath

- Coated chamber for easy clean up
- 2.3L capacity, low profile
- Temperature Range: Room Temperature to 75°C



Cat. No.	Description	UOM
ES3079	Tissue Floating Bath	Each

Slide Warmer

- Multi-tier slide warmer allows user to dry more slides at a time
- Features a redesigned edge to easily place and remove slides
- Dimensions: 14" x 14" x 4"
- Temperature Range: Room Temperature to 70°C



Cat. No.	Description	UOM
ES4573	Slide Warmer, multi-tier	Each

Slide Warmer with Hinged Cover

- Ideal for slides mounted with tissue sections
- Thermal heaters ensures even heat transfer across surface
- Anodized black surface provides contrast
- Features an LED temperature display
- Attached hinged cover with clear viewing area
- Temperature Range: 70°C
- Dimensions: Small: 12" x 9" x 4.5"
Large: 27" x 11" x 64"



Cat. No.	Description	UOM
ES4572-HC	Slide Warmer with hinged cover, small, 23 slide capacity	Each
ES4576-HC	Slide Warmer with hinged cover, large, 66 slide capacity	Each

Unifrost® Microscope Slides

- Pre-cleaned with smooth, grounded edges
- Made from high-quality white German glass
- All slides feature a single side color frosted end to help reduce amount of jamming in automated systems
- The frosted ends are resistant to all common chemicals used in the histology laboratory
- Clipped corner slides available for use in popular slide printers
- Adhesive slides are available, prepared with a permanent adhesive which firmly anchors all specimen types to the slide



Color	Standard	Clipped Corner	Standard (+)	Clipped Corner (+)	Thermal	Thermal (+)	Clipped Corner Thermal	Clipped Corner Thermal (+)	UOM
Aqua	EMS200A	EMSC200A	EMS200A+	EMSC200A+	EMS200A-TH	EMS200A-TH+	-	-	1440/case
Blue	EMS200B	EMSC200B	EMS200B+	EMSC200B+	EMS200B-TH	EMS200B-TH+	-	-	1440/case
Green	EMS200G	EMSC200G	EMS200G+	EMSC200G+	EMS200G-TH	EMS200G-TH+	-	-	1440/case
Gray	EMS200GY	EMSC200GY	EMS200GY+	EMSC200GY+	-	-	-	-	1440/case
Lilac	EMS200L	EMSC200L	EMS200L+	EMSC200L+	-	-	-	-	1440/case
Orange	EMS200OR	EMSC200OR	EMS200OR+	EMSC200OR+	-	-	-	-	1440/case
Pink	EMS200P	EMSC200P	EMS200P+	EMSC200P+	EMS200P-TH	EMS200P-TH+	-	-	1440/case
White	EMS200W	EMSC200W	EMS200W+	EMSC200W+	EMS200W-TH	EMS200W-TH+	EMSC200W-TH	EMSC200W-TH+	1440/case
Yellow	EMS200Y	EMSC200Y	EMS200Y+	EMSC200Y+	EMS200Y-TH	EMS200Y-TH+	-	-	1440/case

Histobond™ Slides

- Emit the lowest fluorescence
- Ultra thin, color-coated ends ideal for automation
- Prepared with a permanent positive charge which firmly anchors all types of sections to the slide



Cat. No.	Description	UOM
UNIA75251+	Histobond™ Slide, aqua	1440/case
UNIB75251+	Histobond™ Slide, blue	1440/case
UNIG75251+	Histobond™ Slide, green	1440/case
UNIL75251+	Histobond™ Slide, lilac	1440/case
UNIP75251+	Histobond™ Slide, pink	1440/case
UNIW75251+	Histobond™ Slide, white	1440/case
UNIY75251+	Histobond™ Slide, yellow	1440/case

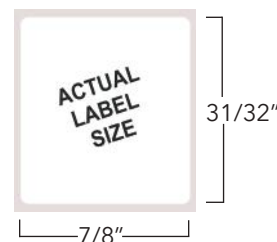
Azerbond™ Slides for IHC

- Designed for the toughest, most difficult histology tissues
- Developed for use where standard adhesive coatings may fail
- Stands up to the toughest IHC procedures and provides excellent staining results
- Ideal for fluorescent microscopy

Cat. No.	Description	UOM
EMS600W+	Azerbond™ Slide, white	1440/case

Self Laminating Microscope Slide Label

- Thermal transfer golve friendly adhesive labels compatible with Ebar system printers
- Our self laminating microscope slide labels allow you to permanently label a slide and laminate it in three easy steps
- The label will be protected from peeling away and is stain and Xylene resistant
- Our labels allow your slides to lie completely flat after application
- Core size: 1"



Cat. No.	Description	UOM
ESL-SL8209	Self laminating microscope slide label, 31/32" x 7/8"	540 labels/roll



ESPO Slide Printer

- Single slide front loading enables refill-free printing, even when tissue is on the slide
- Barcode capable
- Solvent resistant: water, alcohol, xylene
- Fully integrated color touch-screen display and simple software is easy to use
- Two 100 slide cassettes allow for continuous printing
- High quality printing eliminates the need for hand-written labels
- Compact size fits easily next to the microtome

Cat. No.	Description	UOM
ES39900	ESPO slide printer, Blue	Each
ES39900-PH	Thermal print head for ESPO slide printer	Each
ES39900-RIB	Thermal transfer ribbon for ESPO slide printer	10/case
ES39900-RL	Roller for ESPO slide printer	10/case
ES39900-SLST	50 Slide stacker for ESPO slide printer	Each
ES39900-SM	Slide magazine for ESPO slide printer	Each
ES39900-STU	Slide transfer unit for ESPO slide printer	Each



Connectivity

USB
Ethernet
Wifi

Slide Compatibility

Print Speed: 3 seconds per slide, 18 slides per minute
Print Direction: 0°, 90°, 180°, 270°
Slide Size: 25 mm x 75 mm x 1 mm, 26 mm x 76 mm x 1 mm
Frost Size: 15 mm, 20 mm, 25 mm

Specification

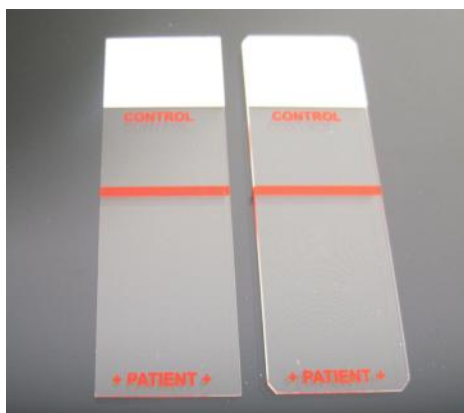
Media Type: Thermal transfer ribbon
Dot Density: 12 dot / mm
Depth: 9.4 in, 240 mm
Width: 4.7 in, 120 mm
Height: 9.8 in, 250 mm
Weight: 15.4 lbs, 7.0 kg

Compatible with all Thermal Slides
(TH catalog numbers) on page 20!

Patient Control Slides

Our Unifrost® patient control slides are suitable for staining protocols which require a control.

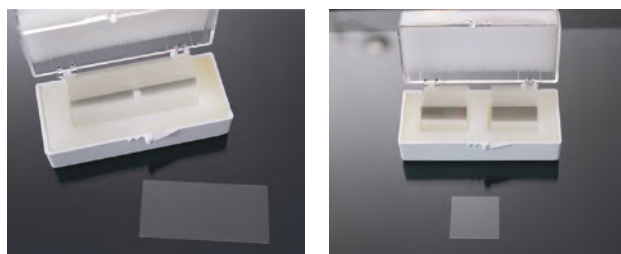
- Feature spaces for both patient sample and control material
- A red line allows for the two samples to be separated (red line is printed on reverse side to allow for movement of reagents)
- Slide is treated with a chemical adhesive for better tissue adhesions
- Available with or without clipped corners



Cat. No.	Description	UOM
ESCS-100	Patient Control Slide, clipped corners	1440/case
ESCS-101	Patient Control Slide, 90° corners	1440/case

Azer Scientific Cover Glass

- Made of pure white borosilicate glass of the first hydrolytic class with excellent chemical resistance and flatness
- Does not emit any disturbing fluorescence under ultraviolet light of the fluorescence microscopy
- Excellent performance in automated coverslippers
- Packaging: 1 oz. per pack (112450-20 is 2 oz. per pack)



Cat. No.	Description	UOM
112222	Cover Glass, 22 x 22 mm, No. 1	10 packs/case
112430	Cover Glass, 24 x 30 mm, No. 1	10 packs/case
112440	Cover Glass, 24 x 40 mm, No. 1	10 packs/case
112450	Cover Glass, 24 x 50 mm, No. 1	10 packs/case
112450-20	Cover Glass, 24 x 50 mm, No. 1	10 packs/case
112455	Cover Glass, 24 x 55 mm, No. 1	10 packs/case
112460	Cover Glass, 24 x 60 mm, No. 1	10 packs/case

Azer Scientific Mounting Medium S-Mounting Medium

A ready-to-use permanent cover slipping medium that is compatible with Xylene or our Everclear Xylene substitute. S-Mounting medium acrylic formula is quick drying and the low viscosity facilitates easy application with no air bubbles. This formula will not yellow or crack over time.

Cat. No.	Description	UOM
ES723	S-Mounting Medium w/ acrylic, 4 oz. dropper bottle	12 x 4 oz./case
ES724	S-Mounting Medium w/ acrylic, 16 oz. bottle	12 x 16 oz./case

Mounting Medium

This traditional mounting medium formula is compatible with xylene and toluene. The low viscosity formula provides a thin adhesive layer for better optical clarity and long-term storage. Provides protection from photobleaching and fading of stains.



Cat. No.	Description	UOM
ES725	Mounting Medium w/ toluene, 4 oz. dropper bottle	12 x 4 oz./case
ES726	Mounting Medium w/ toluene, 16 oz. bottle	6 x 16 oz./case

Azer-Ink Chemically Resistant Markers

- Ultra-fine tip leaves a permanent mark on slides and cassettes
- Designed specifically for histology use
- Smear-proof, waterproof, and odorless
- Resistant to chemicals such as xylene and alcohol



Cat. No.	Description	UOM
ES-001	Azer-Ink, chemically resistant markers	12/box



Ultra Histology Stains and Reagents

Our **Ultra Hematoxylin** is designed to provide the end user with a uniquely formulated stain that can be used in place of Gill Hematoxylin.

- Does not require daily filtering and does not form metallic sheens
- Provides unsurpassed nuclear chromatin delineation with no affinity for background or mucin staining

Our **Ultra Eosin-Y** is specially formulated to provide a striking contrast and brilliant staining of all cytoplasmic components.

- Provides familiar and vibrant cytoplasmic staining and differentiation
- It is alcoholic and acidified, a favorite of many pathologists and other end users



Cat. No.	Description	UOM
ES36101	Ultra Hematoxylin, 500 mL	4 x 500 mL/case
ES36111	Ultra Eosin-Y, 500 mL	4 x 500 mL/case
ES36157	Ultra Bluing Reagent, gallon	4 x 1 gallon/case

Prestige Histology Stains and Reagents

Our **Prestige Hematoxylin** is designed to provide the end user with a uniquely formulated stain that can be used in place of Gill or Harris Hematoxylin.

- Does not require daily filtering or form metallic sheens
- Provides unsurpassed nuclear chromatin delineation with no affinity for background or mucin staining

Our **Prestige Eosin-Y** is specially formulated to provide a bright and consistent cytoplasmic stain.

- Allows for short staining time
- Three distinct color variation



Cat. No.	Description	UOM
ES36001	Prestige Hematoxylin, 500 mL	4 x 500 mL/case
ES36011	Prestige Eosin-Y, 500 mL	4 x 500 mL/case
ES36057	Prestige Bluing Reagent, gallon	4 x 1 gallon/case

Elite Clarifying Reagents

Traditional acid alcohol formulas provide crisp nuclear chromatin detail and eliminate undesired background staining. Elite Acid Rinse is a specially formulated aqueous based acetic acid rinse designed to work with our Ultra and Prestige Hematoxylin stains. All of our clarifiers are pre-mixed and ready-to-use.

Cat. No.	Description	UOM
ES36907	Elite Acid Rinse #1, gallon	4 x 1 gallon/case
ES36947	Acid Alcohol (1%), gallon	4 x 1 gallon/case
ES36937	Acid Alcohol (0.5%), gallon	4 x 1 gallon/case
ES771	Easyview Clarifier, gallon	4 x 1 gallon/case



Modified Mayer's Hematoxylin

- Progressive nuclear stain requires no acid rinse
- Results in a blue stain
- Can be used when less intense staining is desired
- Eliminates need for differentiation and bluing of sections
- Non-specific background staining is minimal

Cat. No.	Description	UOM
ES700	Modified Mayer's Hematoxylin, 16 oz.	4 x 16 oz./case
ES742	Modified Mayer's Hematoxylin, 32 oz.	12 x 32 oz./case
ES743	Modified Mayer's Hematoxylin, gallon	4 x 1 gallon/case

Weigert's Iron Hematoxylin Stain Kit

Weigert's Iron hematoxylin is used in various histology and cytology stain procedures. It is supplied as two parts, Solution A and Solution B, that are mixed before use and produce blue/black nuclear detail.

Cat. No.	Description	UOM
ES777	Stain Kit (Solution A & B), 16 oz.	Each
ES778	Weigert's Hematoxylin, Solution A, 16 oz.	6 x 16 oz./case
ES779	Weigert's Hematoxylin, Solution B, 16 oz.	6 x 16 oz./case

Eosin-Y (Alcoholic)

Eosin-Y is a fast-acting, alcoholic counterstain which provides excellent delineation of cytoplasmic components. This stain provides at least three shades of pink, showing different intensities of erythrocytes, collagen, and the cytoplasm of muscle or epithelial cells.

Cat. No.	Description	UOM
ES709	Eosin-Y stain, alcoholic, 16 oz.	4 x 16 oz./case
ES710	Eosin-Y stain, alcoholic, gallon	4 x 1 gallon/case
ES711	Eosin-Y stain, alcoholic, 2.5 gallon cube.	Each
ES711-32	Eosin-Y stain, alcoholic, 32 oz.	Each
ES737	Eosin-Y, intensified, 32 oz.	6 x 32oz./case
ES738	Eosin-Y, intensified, gallon	4 x 1 gallon/case

Saturated Lithium Carbonate Solution

Saturated lithium carbonate solution is a traditional bluing reagent used in histology staining protocols.

Cat. No.	Description	UOM
ES735	Saturated Lithium Carbonate, 32 oz.	12 x 32 oz./case
ES736	Saturated Lithium Carbonate, gallon	4 x 1 gallon/case

Modified Harris Hematoxylin

- Ready-to-use regressive nuclear stain
- Similar to Mayer's Hematoxylin, but more stable
- Our formulation does not contain mercury
- Provides exceptional nuclear detail when used in progressive or regressive protocol

Cat. No.	Description	UOM
ES701	Harris Hematoxylin, acidified, 16 oz.	4 x 16 oz./case
ES702	Harris Hematoxylin, acidified, gallon	4 x 1 gallon/case
ES739	Harris Hematoxylin, 16 oz.	12 x 16 oz./case
ES740	Harris Hematoxylin, gallon	4 x 1 gallon/case

Gill Hematoxylin

- Progressive nuclear stains
- A range of concentrations are available to suit both cytology and histology protocols
- All stains are formulated to avoid precipitation

Description	16 oz.	UOM	Gallon	UOM
Gill 1 Hematoxylin	ES703	4/case	ES704	4/case
Gill 2 Hematoxylin	ES705	4/case	ES706	4/case
Gill 3 Hematoxylin	ES707	4/case	ES708	4/case

Eosin-Phloxine

Used to enhance differentiation between muscle, red blood cells, and connective tissue. Results in a bright red stain with dramatic differentiation. Eosin-phloxine stain has been formulated to provide the user with increased definition of the cytoplasmic components.

Cat. No.	Description	UOM
ES722-2.5G	Eosin-Phloxine, 2.5 gallon	Each
ES741	Eosin-Phloxine, 32 oz.	12 x 32 oz./case
ES722	Eosin-Phloxine, gallon	4 x 1 gallon/case

Bluing Reagents

- Used to blue tissue sections and enhance nuclear detail
- Can replace harmful washes or rinses that may damage tissue
- Alcoholic and aqueous formulas
- Optimal pH

Cat. No.	Description	UOM
ES744	Bluing Reagent, 16 oz.	12 x 16 oz./case
ES745	Bluing Reagent, gallon	4 x 1 gallon/case
ES776	Scott's Tap Water Substitute, gallon	4 x 1 gallon/case



Easy III™ Rapid Differential Stain

Azer Scientific offers Easy III™, a three-step rapid differential stain. These stains and fixatives are routinely used for differential staining of peripheral blood smears and bone marrow specimens.

- Extensive applicability in cytology for use in fine needle aspiration analysis
- Allows for processing of specimen to take place in 30 seconds
- Uses 1 fixative and 2 staining solutions to achieve desired results

Stat Pack



16 oz set



Cat. No.	Description	UOM
ES902-3	Easy III Step Stain Set, 3 oz. bottles (Stat Pack)	Each
ES902-16	Easy III Step Stain Set, 16 oz.	Each
ES902	Easy III Step Stain Set, 16 oz.	10 sets/case
ES906	Easy III Fixative, 16 oz.	12 x 16 oz./case
ES907	Easy III Stain Solution I, 16 oz.	12 x 16 oz./case
ES908	Easy III Stain Solution II, 16 oz.	12 x 16 oz./case
ES903	Easy III Fixative, gallon	4 x 1 gallon/case
ES904	Easy III Stain Solution I, gallon	4 x 1 gallon/case
ES905	Easy III Stain Solution II, gallon	4 x 1 gallon/case

Methylene Blue Stain Solution

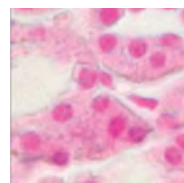
Methylene blue stain solution is a cationic stain that will stain negatively charged cell structure such as the nucleus and cytoplasmic RNA. It can be substituted as a counterstain in some histological protocols.



Cat. No.	Description	UOM
ES831	Methylene Blue, 8 oz.	4 x 8 oz./case
ES830	Methylene Blue, 16 oz.	4 x 16 oz./case

Nuclear Red Stain Solution

Nuclear red stain solution can be used as a substitute for hematoxylin as a counterstain in IHC stain protocols. It will stain nuclear chromatin red and non-specific background tissue pink. It is also commonly used as a counterstain in Alcian Blue stain procedures.



Cat. No.	Description	UOM
ES689	Nuclear Red Stain, 16 oz.	Each

Schiff's Reagent

Schiff's reagent is used for the detection of polysaccharides and muco-substances, such as glycoproteins and glycolipids, in tissues. It will also stain fungal cell walls. The colorless reagent reacts with aldehydes to produce a red color. Periodic acid is used with Schiff reagent in the PAS stain protocol.



Cat. No.	Description	UOM
ES763	Schiff's Reagent, 16 oz.	Each
ES763-G	Schiff's Reagent, gallon	Each

Get Results With Our Staining Accessories

Jars, Racks, Dishes & Trays

Learn more on Page 36

AzerPath H&E Stainer

- Features a user-friendly operator interface with touch screen
- Compact design at only 34" wide
- Continuous loading of slides with the ability to set multiple protocols
- 2 water inlets
- Built-in fume extraction can easily connect to existing lab fume exhaust system
- Rinse water flow control programmable for one station, individually adjustable for five stations
- Up to 50 programs, with 50 steps per program



Includes: racks (2), containers with lids (24), water inlet tubes (2), drain fitting adapter (1), charcoal filter (1), power cord (1)

Specifications

Number of Stations: 30
Number of Rinse Stations: 5 (user-selectable)
Number of Load Stations: 1
Number of Unload Stations: 1
Reagent Container Volume: 350 mL
Drying Station Temperature: 40-70°C

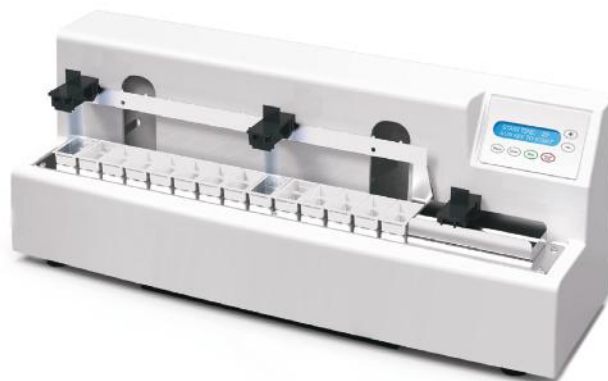
Dimensions

Width: 34"
Depth: 25"
Height: 18"
Weight: 65 lbs
Electrical: 115V

Cat. No.	Description	UOM
ES39320	AzerPath H&E Stainer, ST300	Each

AzerPath Linear Stainer

- Provides consistent staining of slides in an easy-to-use compact design
- Fits on top of most cryostats
- Ideal for Mohs techniques, special staining, and general surgical pathology frozen sections
- Continuous loading of slides
- Features a holding station for up to 16 processed slides
- Programmable station timing from 2 to 300 seconds



Includes: stainless steel tank cover (1), reagent stations (14), rinse stations (3), slide carriers (3), exit tank (1), water inlet hose (1)

Specifications

Number of Reagent Stations: 14
Number of Rinse Stations: 3 (user-selectable)
Slide Carrier Capacity: 4 slides
Reagent Container Volume: 50 mL

Dimensions

Width: 24.5"
Depth: 8.5"
Height: 11"
Weight: 35 lbs

Cat. No.	Description	UOM
ES39300	AzerPath Linear Stainer, ST100	Each

To learn more about **AzerPath** Equipment from Azer Scientific, please contact us.
 Phone: 1-877-770-AZER E-Mail: Sales@AzerSci.com



Acid Fast Bacteria (AFB) Stain Kit

ES3405

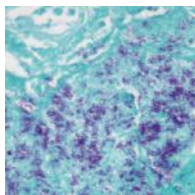
The Acid Fast Bacteria (AFB) Stain kit is intended for use in the histological visualization of Acid Fast Bacteria and Tubercle Bacilli. This kit is a rapid 15-minute procedure. The lipoid capsule of the acid-fast organism takes up carbol fuchsin and resists decolorization.

Acid Fast Organisms: Bright Red

Background: Light Green

Components:

Carbol Fuchsin Solution	125 mL
Acid Alcohol Solution (0.5%)	500 mL
Light Green Solution	125 mL



Alcian Blue (pH 1.0) Stain Kit

ES3399

The Alcian Blue (pH 1.0) Stain Kit is intended for use in the histological visualization of strongly sulfated mucosubstances.

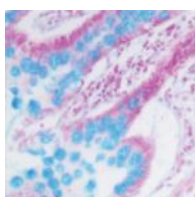
Strongly Sulfated Mucosubstances: Blue

Nuclei: Red

Background: Pink

Components:

Alcian Blue, pH 1.0	250 mL
Sarfanin O Solution	250 mL
Acetic Acid Solution	500 mL



Alcian Blue (pH 2.5) Stain Kit

ES4801

The Alcian Blue (pH 2.5) Stain Kit is intended for use in the histological visualization of sulfated and carboxylated acid mucopolysaccharides and sulfated and carboxylated sialomucins (glycoproteins).

Acidic Sulfated Mucosubstances: Blue

Hyaluronic Acid: Blue

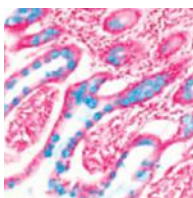
Sialomucins: Blue

Nuclei: Red

Background: Pink

Components:

Alcian Blue, pH 2.5	250 mL
Sarfanin O Solution	250 mL
Acetic Acid Solution	500 mL



Amyloid Stain Kit

ES4802

The Amyloid Stain Kit (Congo Red) is intended for use in the histological visualization of amyloid in tissue sections.

Examination under a polarizing microscope results in green birefringence of amyloid.

Amyloid: Red to Pink

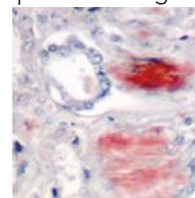
Erythrocytes: Light Orange

Eosinophil Granules: Orange to Red

Nuclei: Blue

Components:

Congo Red Solution	500 mL
Hematoxylin, Mayer's	500 mL
Bluing Reagent	500 mL



Blue Feulgen DNA Ploidy Analysis Stain Kit

ES36984

The Blue Feulgen Stain Kit is designed to stain deoxyribonucleic acid (DNA) in cell nuclei. After staining, the cells may be quantitatively evaluated for DNA content visually or using commercially available imaging systems. The amount of stain color developed is directly proportional to the amount of DNA present in the stained nuclei. This kit is designed for cytological specimens prepared from cytopspins, smears, cell imprints, disaggregated tissue, or whole tissue.

DNA in cell nuclei: Blue

Cytoplasm: Transparent

Components:

Blue Feulgen Stain	500 mL (x2)
Decolorizer	10 vials

Bielschowsky's Stain Kit (Modified)

ES4826

The Bielschowsky's Stain Kit (Modified) is designed for the histological visualization of nerve fibers, neurofibrillary tangles, and senile plaques in Alzheimer disease.

Axons: Black

Neurofibrillary Tangles: Black

Senile Plaques: Black

Nucleoli: Dark Brown

Background: Yellow to Light Brown

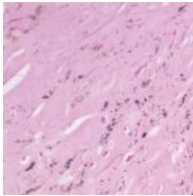
Components:

Silver Nitrate Solution (20%)	500mL
Formalin Solution (20%)	8mL Dropper
Citric Acid Solution (Bielschowsky's)	8mL Dropper
Nitric Acid Solution (Bielschowsky's)	8mL Dropper
Sodium Thiosulfate Solution (5%)	125mL

Calcium Stain Kit (Modified von Kossa) ES4803

The Calcium Stain Kit (Modified Von Kossa) is intended for use in the histological visualization of calcium deposits in paraffin or frozen sections.

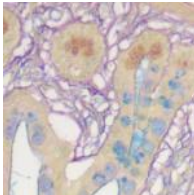
- Calcium in mass deposits:** Black
- Calcium in dispersed deposits:** Gray
- Nuclei:** Red
- Cytoplasm:** Light Pink
- Components:**
 - Silver Nitrate Solution (5%) 125 mL
 - Sodium Thiosulfate Solution (5%) 125 mL
 - Nuclear Fast Red Solution 125 mL



Colloidal Iron Stain Kit ES4804

The Colloidal Iron Stain Kit is designed for the histological visualization of acid mucopolysaccharides.

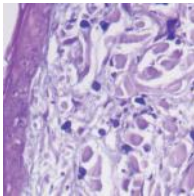
- Acidic Sulfated Mucosubstances:** Bright Blue
- Hyaluronic Acid:** Blue
- Collagen:** Shades of Red
- Components:**
 - Acetic Acid Solution (12%) 500 mL
 - Hydrochloric Acid Solution (1N) 125 mL
 - Potassium Ferrocyanide Solution (3%) 125 mL
 - Colloidal Iron Stock Solution 125 mL
 - Van Gieson's Solution 125 mL



Combined Eosinophil-Mast Cell Stain Kit ES4805

The Combined Eosinophil-Mast Cell Stain Kit (C.E.M.) is intended for simultaneous visualization of eosinophils and mast cells.

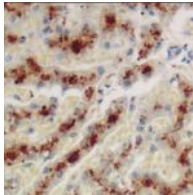
- Mast Cells:** Bright Blue
- Eosinophils:** Bright Red
- Nuclei:** Blue
- Components:**
 - Astra Blue Solution 125 mL
 - Vital New Red Solution 125 mL
 - Hematoxylin, Mayer's 125 mL



Copper Stain Kit (For Microwave) ES4806

The Copper Stain Kit (For Microwave) is intended for the demonstration of copper deposits in tissue sections.

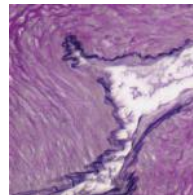
- Copper Deposits:** Light Brown or Red
- Nuclei:** Blue
- Components:**
 - Rhodanine Solution (Stock) 30 mL
 - Acetate Buffer Solution, pH 8.0 2 x 500 mL
 - Hematoxylin, Mayer's (Lillie's Mod) 125 mL



Elastic Stain Kit (Modified Verhoff's) ES4807

The Elastic Stain Kit is intended for use in histological demonstration of elastin in tissue sections. Demonstration of elastic tissue is useful in cases of emphysema (atrophy of elastic tissue), arteriosclerosis (thinning and loss of elastic fibers) and various other vascular diseases.

- Elastic Fibers:** Black to Blue/Black
- Nuclei:** Blue to Black
- Collagen:** Red
- Muscle & Other:** Yellow
- Components:**
 - Hematoxylin Solution (5%) 250 mL
 - Ferric Chloride (10%, aqueous) 125 mL
 - Lugol's Iodine Solution 125 mL
 - Ferric Chloride (2%) Differentiating Sol. 125 mL
 - Sodium Thiosulfate Solution 125 mL
 - Van Gieson's Solution 125 mL



Fite's Stain Kit (Leprosy & Nocardia Procedures) ES4808

The Fite's Stain Kit (For Leprosy) is intended for use in the histological visualization of mycobacterium leprae (leprosy).

- Lepra bacillus:** Red
- Nocardia:** Red
- Background:** Blue
- Components:**
 - Xylene-Peanut Oil Solution 125 mL
 - Carbol Fuchsin Solution 125 mL
 - Acid Alcohol Solution (1%) 500 mL
 - Methylene Blue Solution 125 mL



Fontana Masson Stain Kit (Argentaffin Cells & Melanin)

ES4809

The Fontana-Masson Stain Kit is intended for use in the histological visualization of Argentaffin and Melanin in paraffin or frozen sections.

Argentaffin Cells: Black

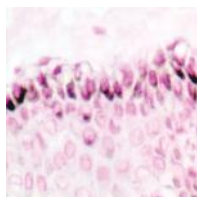
Melanin: Black

Nuclei: Red

Cytoplasm: Light Pink

Components:

Gold Chloride Solution (0.2%)	125 mL
Silver Nitrate Solution (10%)	5 x 9 mL
Sodium Thiosulfate Solution (5%)	125 mL
Nuclear Fast Red Solution	125 mL



Giemsa Stain Kit (May-Grunwald)

ES3401

The Giemsa Stain Kit (May-Grunwald) is intended for use in the visualization of cells present in hematopoietic tissues and certain microorganisms. This kit may be used on formalin-fixed, paraffin-embedded or frozen sections.

Nuclei: Blue/Violet

Cytoplasm: Light Blue

Collagen: Pale Pink

Muscle Fibers: Pale Pink

Erythrocytes: Gray, Yellow, Pink

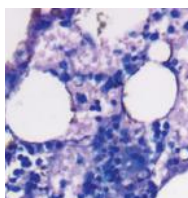
Rickettsia: Reddish-Purple

Helicobacter Pylori: Blue

Mast Cells: Dark Blue, Red Granules

Components:

May-Grunwald Solution	500 mL
Giemsa Stock Solution	500 mL
Phosphate Buffer Solution, pH 6.8	500 mL



GMS Stain Kit

ES3397

The Modified Gomori Methenamine-Silver Nitrate Stain (GMS Stain Kit) is intended for use in the histological visualization of fungi, basement membrane, and some opportunistic organisms such as *Pneumocystis carinii*. *Pneumocystis carinii* is an opportunistic pathogen that causes severe pulmonary disease in humans, dogs, rats, mice, and other vertebrate species with acquired, induced, or inherited immune deficiency syndromes. In addition, this procedure will demonstrate *Actinomyces* and related species, *Nocardia* asteroids, and certain encapsulated bacteria.

Fungi: Black

P. Carinii: Black

Mucin: Gray

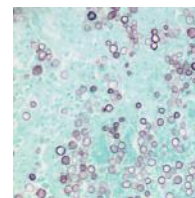
Mycelia (inner): Rose

Hyphae (inner): Rose

Background: Light Green

Components:

Silver Nitrate Solution	125 mL
Methenamine Solution	125 mL
Gold Chloride Solution (0.2%)	125 mL
Borax Solution	15 mL
Sodium Bisulfite Solution	125 mL
Chromic Acid Solution	125 mL
Sodium Thiosulfate Solution (5%)	125 mL
Light Green Solution	125 mL



Gram Stain Kit

ES3404

The Gram Stain Kit is intended for the demonstration and differentiation of Gram-positive and Gram-negative bacteria.

Gram Positive Bacteria: Blue

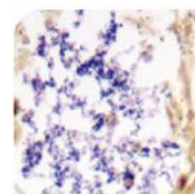
Gram Negative Bacteria: Red

Other Tissue: Yellow

Nuclei: Red

Components:

Gentian Violet Solution	125 mL
Lugol's Iodine Solution	125 mL
Gram's Decolorizer Solution	125 mL
Carbol Fuchsin Solution	125 mL
Tartrazine Solution	125 mL



Gram Stain Kit (Modified Brown & Brenn)

ES4822

The Modified Brown and Brenn Gram stain Kit is intended for the demonstration and differentiation of Gram-positive and Gram-negative bacteria.

Gram Positive Bacteria: Blue

Gram Negative Bacteria: Red

Other Tissue: Slightly Yellow - Pink

Nuclei: Red

Components:

Gentian Violet Solution	125 mL
Lugol's Iodine Solution	125 mL
Gram's Decolorizer Solution	125 mL
Safranin-O Solution	125 mL
Picric Acid - Acetone Solution (0.1%)	125 mL

H. Pylori Rapid Stain Kit

ES4811

The H. Pylori Rapid Stain Kit is designed for demonstrating Helicobacter Pylori infected tissue. Kit may be used on formalin fixed, paraffin-embedded tissue, or frozen sections.

Helicobacter Pylori: Blue

Mucin: Yellow

Background: Light Blue

Components:

Periodic Acid Solution	500 mL
Sodium Metabisulfite Solution	125 mL
Alcian Yellow Solution	125 mL
Toluidine Blue Solution	2 x 6 mL
Sodium Hydroxide Solution	8 mL



Hepatitis B Stain Kit

ES4810

The Hepatitis B Stain Kit is intended for use in the histological visualization of Hepatitis B surface antigen (HBsAg). This kit may be used on formalin-fixed, paraffin-embedded or frozen sections.

HBsAg: Dark Brown

Components:

Potassium Permanganate Solution (5%)	30 mL
Sulfuric Acid Solution (3%)	30 mL
Oxalic Acid Solution (2%)	125 mL
Orcein Solution	125 mL
Differentiating Solution	125 mL

Iron Stain Kit

ES3402

The Iron Stain Kit is intended for use in the detection of ferric iron in tissues, blood smears, or bone marrow smears. Ferric iron is normally found in small amounts in bone marrow and the spleen. Abnormally large deposits may be seen in hemochromatosis and hemosiderosis. This product is based on the Prussian Blue reaction in which ionic iron reacts with acid ferrocyanide producing a blue color.

Iron: Bright Blue

Nuclei: Red

Background: Pink

Components:

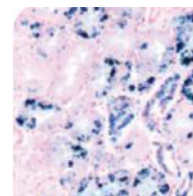
Potassium Ferrocyanide Solution	500 mL
Hydrochloric Acid Solution (2%)	500 mL
Nuclear Fast Red Solution	125 mL

Bone or Blood Smears

Sideroblasts: These are nucleated erythrocytes containing at least one small blue granule. If the blue granules surround the nucleus, the cell is a ringed sideroblast.

Siderocytes: These are non-nucleated erythrocytes containing at least one blue granule.

Reticuloendothelial Iron: Usually seen as blue particles on the marrow smear or as blue particles in the cytoplasm or phagocytic cells.



Luxol Fast Blue Stain Kit

ES4812

The Luxol Fast Blue Stain Kit is designed for staining myelin/myelinated axons and Nissl substance on formalin fixed, paraffin-embedded tissue as well as frozen tissue. This product is used for identifying the basic neuronal structure in brain or spinal cord sections.

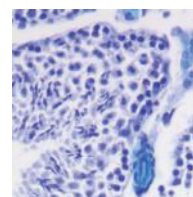
Myelinated Fibers: Blue

Nissl Substance: Violet

Nerve Cells: Violet

Components:

Cresyl Echt Violet Solution	125 mL
Luxol Fast Blue Solution	125 mL
Lithium Carbonate Solution (0.05%)	500 mL
Alcohol, Reagent (70%)	500 mL





Movat Pentachrome Stain Kit

ES4828

The Movat Pentachrome Stain Kit (Modified Russel-Movat) is intended for use in histological demonstration of collagen, elastin, muscle, mucin and fibrin in tissue sections. This procedure is useful for studying heart, blood vessels, and vascular disease.

Elastic Fibers: Black to Blue/Black

Nuclei: Blue/Black

Collagen: Yellow to Red

Reticular Fibers: Yellow

Mucin: Bright Blue

Fibrin: Bright Red

Muscle: Red

Components:

Hematoxylin Solution (5%)	250mL
Ferric Chloride Solution (10%)	125mL
Lugol's Iodine Solution	125mL
Ferric Chloride (2%) Differentiating Solution	125mL
Sodium Thiosulfate Solution (5%)	125mL
Acetic Acid Solution (3%)	125mL
Acetic Acid Solution (1%)	250mL
Biebrich Scarlet - Acid Fuchsin Solution	125mL
Phosphotungstic Acid Solution (5%)	250mL
Metanil Yellow Solution	125mL

Mucicarmine Stain Kit (Modified Southgate's)

ES4813

Mucicarmine Stain Kit (Modified Southgate's) is intended for use in the histological visualization of acid mucopolysaccharides in tissue sections. This product is useful in distinguishing mucin negative undifferentiated squamous cell lesions from mucin positive adenocarcinomas. In addition, this product will stain the mucopolysaccharide capsule of *Cryptococcus neoformans*.

Mucin: Pink/Red

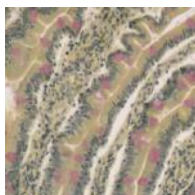
Capsule of *Cryptococcus*: Red

Nuclei: Black/Blue

Other tissue components: Yellow

Components:

Hematoxylin, Mayer's	125 mL
Bluing Reagent	125 mL
Mucicarmine Solution	125 mL
Tartrazine Solution	125 mL



Oil Red O Stain Kit (For Fat)

ES4814

The Oil Red O Stain Kit is intended for use in the histological visualization of fat cells and neutral fat. This kit may be used ONLY on frozen tissue sections, fresh smears, or touch preps.

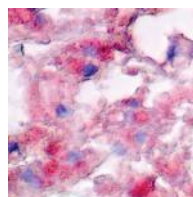
Fat Cells: Red

Neutral Fat: Red

Nuclei: Blue

Components:

Propylene Glycol	500 mL
Oil Red O Solution	125 mL
Hematoxylin, Mayer's	125 mL



PAS Stain Kit (Modified Lillie's)

ES3400

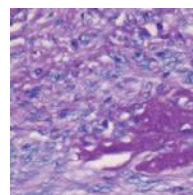
The Periodic Acid Schiff (PAS) Stain Kit is intended for use in histological demonstration of lymphocytes and mucopolysaccharides. The staining patterns of the lymphocytes are helpful in making therapeutic decisions in established cases of lymphocytic leukemia. The PAS reaction tissue sections are useful for the demonstration of mucopolysaccharides. PAS staining may also be used for the demonstration of fungal organisms in tissue sections.

PAS Positive Material: Magenta

Nuclei: Black/Blue

Components:

Periodic Acid Solution	250 mL
Schiff's Solution	250 mL
Hematoxylin, Mayer's	125 mL
Bluing Reagent	125 mL



PAS Stain Kit (For Fungus)

ES4815

The Periodic Acid Schiff (PAS) for Fungus Stain Kit is intended for use in histological demonstration of fungal organisms in tissue sections. The PAS reaction is also useful in the demonstration of lymphocytes and mucopolysaccharides. The staining patterns of the lymphocytes are helpful in making therapeutic decisions in established cases of lymphocytic leukemia.

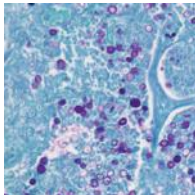
Fungal Organisms: Magenta

PAS Positive Material: Magenta

Nuclei: Black/Blue

Components:

Periodic Acid Solution	250 mL
Schiff's Solution	250 mL
Light Green Solution	125 mL



PAS Stain Kit (Diastase)

ES4825

The Periodic Acid Schiff (PAS) Diastase Stain Kit is intended for use in the visualization of lymphocytes and mucopolysaccharides. The α -Amylase digestion step effectively removes glycogen to allow a visual comparison of digested and undigested slides. The PAS demonstrates mucopolysaccharides in tissue sections.

PAS Positive Material: Magenta

Nuclei: Blue

Components:

Alpha-Amylase Solution (1%)	250mL
Periodic Acid Solution	250mL
Schiff's Solution	250mL
Hematoxylin, Mayer's	2x125mL
Bluing Reagent	2x125mL

Pneumocystis Stain Kit

ES4816

The Pneumocystis Stain Kit will demonstrate Pneumocystis carinii in cytology smears and paraffin embedded or frozen tissue sections.

Pneumocystis carinii: Violet/Purple

Connective Tissue: Blue/Green

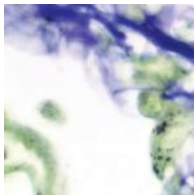
Erythrocytes: Yellow

Mucin: Rose/Purple

Cartilage: Rose

Components:

Cresyl Echt Violet Solution (0.1%)	125mL
Naphthol Yellow S Solution	125mL
Staining Jar	60mL



Precision Reticulum Stain Kit

ES3403

The Precision Reticulum Stain Kit is intended for use in histological demonstration of reticular fibers. The main function of reticular fibers is to provide support. They are normally found throughout the body, particularly in liver, lymph node, spleen and kidney. Ammoniacal silver stains are the most commonly used methods for demonstration of reticular fibers.

Reticulum: Black

Nuclei: Red

Components:

Potassium Permanganate Solution (1%)	125 mL
Potassium Metabisulfite Solution (3%)-	125 mL
Ferric Ammonium Sulfate Solution (3%)	125 mL
Formalin Solution (20%)	125 mL
Gold Chloride Solution (0.1%)	125 mL
Sodium Thiosulfate Solution (5%)	125 mL
Nuclear Fast Red Solution	125 mL
Sodium Hydroxide Solution (3%)	125 mL
Silver Nitrate Solution (10%)	5 x 10 mL

PTAH Stain Kit (For Microwave)

ES4817

The P.T.A.H. Stain Kit for Microwave is intended for use in the histological visualization of collagen, striated muscle, and glial fibers without using Zenker's Fixative with Mercuric Chloride as a mordant. This kit may be used on formalin-fixed, paraffin-embedded, or frozen sections.

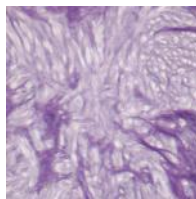
Fibrin, Striated Muscle, Glial Fibers: Blue

Collagen: Brownish/Red

Nuclei: Blue

Components:

Zinc Chloride Solution (10%)	500 mL
Ferric Ammonium Sulfate	125 mL
P.T.A.H. Solution	125 mL





Reticulum Stain Kit (Modified Gomori's)

ES4818

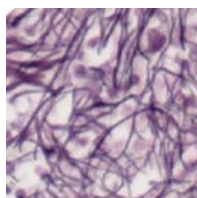
The Reticulum Stain Kit (Modified Gomori's) is intended for use in histological demonstration of reticular fibers. The main function of reticular fibers is to provide support. They are normally found throughout the body, particularly in the liver, lymph node, spleen and kidney. Ammoniacal silver strains are the most commonly used methods for demonstration of reticular fibers.

Reticulum: Black

Nuclei: Red

Components:

Potassium Permanganate Solution	125 mL
Sulfuric Acid Solution (1N)	15 mL
Potassium Metabisulfite Solution	125 mL
Ferric Ammonium Sulfate Solution	125 mL
Silver Nitrate Solution (10%)	65 mL
Formalin Solution (20%)	125 mL
Gold Chloride Solution (0.2%)	125 mL
Sodium Thiosulfate Solution (5%)	125 mL
Nuclear Fast Red Solution	125 mL



Trichrome Stain Kit (Modified Gomori's)

ES4820

The Trichrome Stain Kit (Modified Gomori's) is intended for use in the histological visualization of collagenous connective tissue fibers in tissue sections.

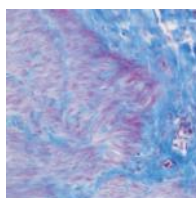
Collagen: Blue

Muscle Fibers: Red

Nuclei: Black/Blue

Components:

Bouin's Fluid	125 mL
Weigert's Iron, Hematoxylin	250 mL
Trichrome Stain	125 mL
Acetic Acid Solution	250 mL
Acid Alcohol Solution	250 mL



Trichrome Stain Kit (Modified Masson's)

ES3398

The Trichrome Stain Kit (Modified Masson's) is intended for use in the histological visualization of collagenous connective tissue fibers in tissue sections. This kit may be used on formalin-fixed, paraffin-embedded, or frozen sections.

Collagen: Blue

Muscle Fibers: Red

Nuclei: Black/Blue

Components:

Bouin's Fluid-	125 mL
Weigert's Iron, Hematoxylin (A)	125 mL
Weigert's Iron, Hematoxylin (B)	125 mL
Biebrich Scarlet/Acid Fuchsin Solution	125 mL
Phosphomolybdic/Phosphotungstic Acid Sol.	125 mL
Aniline Blue Solution	125 mL
Acetic Acid Solution (1%)	125 mL

Warthin-Starry Stain Kit

ES4821

The Warthin-Starry Stain Kit is intended for use in the visualization of Spirochetes, Helicobacter pylori, Legionella pneumophila, and Cat Scratch Fever bacteria. This kit may be used on formalin-fixed, paraffin-embedded, or frozen sections.

Helicobacter pylori: Black

Legionella pneumophila: Black

Spirochetes: Black

Cat Scratch Fever Bacteria: Black

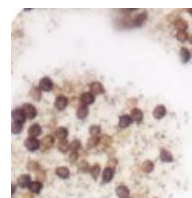
Klebsiella: Brown/Black

Nuclei: Brown

Background: Yellow

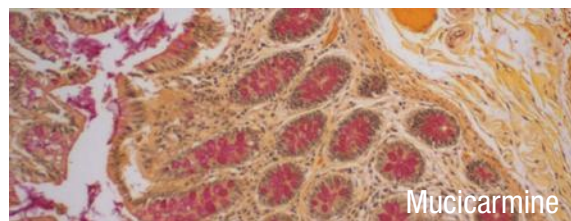
Components:

Spirochete Sensitizer	125 mL
Gelatin (4%), Acidulated	2 x 65 mL
Silver Nitrate Solution (0.5%), Acidulated	125 mL
Hydroquinone Solution (0.1%), Acidulated	2 x 30 mL
Silver Nitrate Solution (2%), Acidulated	30 mL



Tissue Control Slides

Azer Scientific's control slides are carefully prepared with paraffin embedded human tissue sections containing specific characteristics that are used for monitoring staining procedures in pathology laboratories. Each package contains 10 or 99 unstained Unifrost® microscope slides. One additional slide is stained with the proper procedure to demonstrate and validate the expected results.



Mucicarmine

Description	10/Pack Cat No.	10/Box UOM	100/Box Cat. No.	100/Box UOM
Acid Fast Bacteria	ESCS-102	10 unstained, 1 stained/box	ESCS-102-100	99 unstained, 1 stained/box
Pneumocystis	ESCS-103	10 unstained, 1 stained/box	ESCS-103-100	99 unstained, 1 stained/box
Alcian Blue	ESCS-104	10 unstained, 1 stained/box	ESCS-104-100	99 unstained, 1 stained/box
Amyloid	ESCS-106	10 unstained, 1 stained/box	ESCS-106-100	99 unstained, 1 stained/box
Argentaffin	ESCS-107	10 unstained, 1 stained/box	ESCS-107-100	99 unstained, 1 stained/box
Bile	ESCS-109	10 unstained, 1 stained/box	ESCS-109-100	99 unstained, 1 stained/box
Elastic Tissue	ESCS-111	10 unstained, 1 stained/box	ESCS-111-100	99 unstained, 1 stained/box
Fungi-PAS	ESCS-113	10 unstained, 1 stained/box	ESCS-113-100	99 unstained, 1 stained/box
Fungi-GMS Silver Strain	ESCS-114	10 unstained, 1 stained/box	ESCS-114-100	99 unstained, 1 stained/box
Giemsa	ESCS-115	10 unstained, 1 stained/box	ESCS-115-100	99 unstained, 1 stained/box
Glycogen	ESCS-116	10 unstained, 1 stained/box	ESCS-116-100	99 unstained, 1 stained/box
Gram Organism	ESCS-117	10 unstained, 1 stained/box	ESCS-117-100	99 unstained, 1 stained/box
Iron	ESCS-118	10 unstained, 1 stained/box	ESCS-118-100	99 unstained, 1 stained/box
Luxol Fast Blue	ESCS-120	10 unstained, 1 stained/box	ESCS-120-100	99 unstained, 1 stained/box
Massons	ESCS-121	10 unstained, 1 stained/box	ESCS-121-100	99 unstained, 1 stained/box
Melanin	ESCS-122	10 unstained, 1 stained/box	ESCS-122-100	99 unstained, 1 stained/box
Mucicarmine	ESCS-124	10 unstained, 1 stained/box	ESCS-124-100	99 unstained, 1 stained/box
Periodic Acid	ESCS-125	10 unstained, 1 stained/box	ESCS-125-100	99 unstained, 1 stained/box
P.T.A.H	ESCS-126	10 unstained, 1 stained/box	ESCS-126-100	99 unstained, 1 stained/box
Reticulum	ESCS-127	10 unstained, 1 stained/box	ESCS-127-100	99 unstained, 1 stained/box
Trichrome	ESCS-129	10 unstained, 1 stained/box	ESCS-129-100	99 unstained, 1 stained/box
Fontana Massons	ESCS-172	10 unstained, 1 stained/box	ESCS-172-100	99 unstained, 1 stained/box

IHC Tissue Control Slides

Azer Scientific's line of IHC control slides are designed specifically for quality control of immunohistochemistry staining protocols.

Each package includes 10 or 99 unstained slides and one stained slide (exception: ESCS-170 which contains 10 negative and 10 positive).



Description	10/Box Cat No.	10/Box UOM	100/Box Cat. No.	100/Box UOM
Helicobacter/H. Pylori	ESCS-130	10 unstained, 1 stained/box	ESCS-130-100	99 unstained, 1 stained/box
PIN-4	ESCS-170	10 negative, 10 positive/box	-	-
CMV (Cytomegalovirus)	ESCS-171	10 unstained, 1 stained/box	ESCS-171-100	99 unstained, 1 stained/box
PSA (Prostate Specific Antigen)	ESCS-174	10 unstained, 1 stained/box	ESCS-174-100	99 unstained, 1 stained/box
ER	ESCS-175	10 unstained, 1 stained/box	ESCS-175-100	99 unstained, 1 stained/box
PR	ESCS-176	10 unstained, 1 stained/box	ESCS-176-100	99 unstained, 1 stained/box
Ki67	ESCS-178	10 unstained, 1 stained/box	ESCS-178-100	99 unstained, 1 stained/box
Normal Cervix	ESCS-179	10 unstained, 1 stained/box	-	-
HPV	ESCS-180	10 unstained, 1 stained/box	ESCS-180-100	99 unstained, 1 stained/box
Napsin A	ESCS-187	10 unstained, 1 stained/box	ESCS-187-100	99 unstained, 1 stained/box
CD30	ESCS-188	10 unstained, 1 stained/box	ESCS-188-100	99 unstained, 1 stained/box
GCDPF-15	ESCS-189	10 unstained, 1 stained/box	ESCS-189-100	99 unstained, 1 stained/box
EMA (Epithelial Membrane Antigen)	ESCS-191	10 unstained, 1 stained/box	ESCS-191-100	99 unstained, 1 stained/box
CD21	ESCS-192	10 unstained, 1 stained/box	ESCS-192-100	99 unstained, 1 stained/box
Alpha-Fetoprotein	ESCS-193	10 unstained, 1 stained/box	ESCS-193-100	99 unstained, 1 stained/box
Calcitonin	ESCS-194	10 unstained, 1 stained/box	ESCS-194-100	99 unstained, 1 stained/box
GMS stain	ESCS-195	10 unstained, 1 stained/box	-	-



IHC Pre-Procedure Solutions

Cat. No.	Description	UOM
ES35911	Pepsin, stabilized solution, 60 mL	Each
ES35912	Pepsin, stabilized solution, 125 mL	Each
ES35937	Michel's Transport Fluid, 10 L	Each
ES35938	Michel's Transport Fluid, 20 L	Each
ES35935	Michel's Transport Fluid, 500 mL	Each
ES35936	Michel's Transport Fluid, 1000 mL	Each
ES35947	Michel's Transport Wash Buffer, 10 L	Each
ES35948	Michel's Transport Wash Buffer, 20 L	Each
ES35945	Michel's Transport Wash Buffer, 500 mL	Each
ES35946	Michel's Transport Wash Buffer, 1000 mL	Each

IHC Reagents & Buffers

For more sizes, please visit our website.

Cat. No.	Description	UOM
ES35505	Primary Antibody Diluent (Phosphate, Green), 500 mL	Each
ES35515	Primary Antibody Diluent (Tris, Green), 500 mL	Each
ES35522	Citrate Buffer (10x), pH 6.0, 125mL	Each
ES35525	Citrate Buffer (10x), pH 6.0, 500 mL	Each
ES35526	Citrate Buffer (10x), pH 6.0, 1000 mL	Each
ES35535	Citrate Plus (10x) HIER Solution, 500 mL	Each
ES35538	Citrate Plus (10x) HIER Solution, 1000 mL	Each
ES35615	Phosphate Buffered Saline w/ Tween 20 (20x), pH 7.6, 500 mL	Each
ES35571	Permanent Red Kit (for Alkaline Phosphatase), 61 mL	Each
ES35625	Tris Buffered Saline w/ Tween 20 (20x), pH 7.4, 500 mL	Each
ES35695	Tris Buffered Saline plus Tween 20 (10x) pH 7.5, 500 mL	Each
ES35698	Tris Buffered Saline plus Tween 20 (10x) pH 7.5, 1000 mL	Each
ES35593	Trypsin, stabilized solution, 155 mL	Each
ES35635	Tween 20, 500 mL	Each
ES35545	Blocking Buffer, 500 mL	Each
ES35559	DAB Stain Removal Kit, 500 mL	Each
ES35676	EDTA- Saline Buffer (10X Concentrate), pH 8.0, 500 mL	Each
ES35678	EDTA- Saline Buffer (10X Concentrate), pH 8.0, 500 mL	Each
ES35686	Peroxide Block for Image Analysis, 500 mL	Each
ES35688	Peroxide Block for Image Analysis, 1000 mL	Each

Slide Hybridization System for IHC

- Ideal for performing IHC and In Situ hybridization reactions
- 12 slide capacity
- Digital microprocessor allows for control over three timed segments
- Includes calibration mode to ensure accuracy
- Leveling feet provide stability
- Features two wells for protocols requiring humidity
- Dimensions: 17" x 10" x 4"
- Temperature Range: Ambient +5°C to 100°C

Cat. No.	Description	UOM
ES39521	Slide Hybridization System for IHC	Each

IHC Stains

We offer a selection of individual stains and stain packs to accommodate the needs of your lab. Instructions for Use and full product descriptions can be found on our website.

Cat. No.	Description	UOM
ES35311	UltraTek Horseradish Peroxidase, 8 mL	Each
ES35312	UltraTek Horseradish Peroxidase, 15 mL	Each
ES35314	UltraTek Horseradish Peroxidase, 125 mL	Each
ES35316	UltraTek Horseradish Peroxidase, 500 mL	Each
ES35318	UltraTek Horseradish Peroxidase, 1000 mL	Each
ES35331	UltraTek Anti-Polyvalent, 8 mL	Each
ES35332	UltraTek Anti-Polyvalent, 15 mL	Each
ES35334	UltraTek Anti-Polyvalent, 125 mL	Each
ES35336	UltraTek Anti-Polyvalent, 500 mL	Each
ES35338	UltraTek Anti-Polyvalent, 1000 mL	Each
ES35351	CRF Anti-Polyvalent HRP Polymer, 8 mL	Each
ES35352	CRF Anti-Polyvalent HRP Polymer, 15 mL	Each
ES35354	CRF Anti-Polyvalent HRP Polymer, 125 mL	Each
ES35356	CRF Anti-Polyvalent HRP Polymer, 500 mL	Each
ES35358	CRF Anti-Polyvalent HRP Polymer, 1000 mL	Each
ES35362-70	UltraTek HRP Anti-Polyvalent, 70 slides	Each
ES35372	DAB Chromagen/Substrate Bulk Pack, high contrast, 530 mL	Each
ES35374	DAB Chromagen/Substrate Bulk Pack, high contrast, 1060 mL	Each
ES35391-1	UltraTek Alk-Phos Anti-Polyvalent Lab Pack, 1250 slides	Each
ES35391-5	UltraTek Alk-Phos Anti Polyvalent Lab Pack, 5000 slides	Each
ES35391-10	UltraTek Alk-Phos Anti-Polyvalent Lab Pack, 10000 slides	Each
ES35393-1	UltraTek HRP Anti-Polyvalent Lab Pack, 1250 slides	Each
ES35393-5	UltraTek HRP Anti-Polyvalent Lab Pack, 5000 slides	Each
ES35393-10	UltraTek HRP Anti-Polyvalent Lab Pack, 10000 slides	Each
ES35395-1	UltraTek HRP Anti-Mouse Lab Pack, 1250 slides	Each
ES35395-5	UltraTek HRP Anti-Mouse Lab Pack, 5000 slides	Each



Slide Staining Jars

- Slide holder holds 12 slides and features a handle for safe and easy dipping of samples
- Each staining jar has a stable base allowing for less reagent use (about 80 mL)
- Slide staining kit includes 5 jars (one of each color), and 1 slide holder. Additional kit available with metal work station rack, which is also available separately.



Cat. No.	Description	UOM
ES4400AS	Slide Staining Kit, 5 jars and 1 slide holder	Each
ES4400KT	Slide Staining Jars Kit, 6 jars (1 of each and 2 white), 1 slide holder, 1 metal work station rack	Each
ES4400B	Slide Staining Jar, blue	6/case
ES4400G	Slide Staining Jar, green	6/case
ES4400P	Slide Staining Jar, pink	6/case
ES4400Y	Slide Staining Jar, yellow	6/case
ES4400W	Slide Staining Jar, white	6/case
ES4401	Slide holder	6/case
ES4400RK	Metal work station rack	Each

Glass Coplin Jar

Each coplin jar encompasses wide, flat, and round bases. Able to hold up to 10 slides, back-to-back.

Dimensions: 3" high, 1.2" internal diameter



Cat. No.	Description	UOM
ES3086	Glass Coplin Jar	Each

Plastic Coplin Jar

This sturdy coplin jar is made of polypropylene and designed to hold up to 10 microscope slides. The inside of the jar is grooved to support and protect slides placed back-to-back.

Cat. No.	Description	UOM
ES050	Plastic Coplin Jar	12/case

Glass Staining Dishes

Our glass staining dishes are ideal for manual staining. Available in 20 and 30 place configurations. Racks sold separately.



Cat. No.	Description	UOM
ES36970	Glass Stain Dish, 20 place	Each
ES36971	Glass Stain Dish, 30 place	Each
ES36973	Rack for 20 Place Dish	Each
ES36974	Rack for 30 Place Dish	Each

Slide Staining Trays

Suitable for routine staining requiring a humid chamber, but is also ideal for hematology, cytology, and microbiology labs.

- When humidity is needed, wells between rails will hold water securely without splashing
- Rubber feet ensure greater stability
- Base is made of sturdy ABS plastic which can withstand most chemicals
- Raised rails for easy slide retrieval
- Base holds excess stain solution from running off slides
- Slide staining trays are stackable to save space



Description	10 Place	20 Place	UOM
Base with Clear Lid	ES3071	ES3075	Each
Base with Black Lid	ES3072	ES3076	Each
Clear Lid	ES3073	ES3077	Each
Black Lid	ES3074	ES3078	Each



Saccomanno's Fixative

Specifically designed for collection and fixation of cytology specimens, such as FNA's, urine, sputums, bronchial washings, and pleural and peritoneal fluids.

Cat. No.	Description	UOM
PFS-20	Saccomanno's Fixative, 20 mL prefill	128/case
PFS-120	Saccomanno's Fixative, 120 mL prefill	48/case
ES727-16	Saccomanno's Fixative, 16 oz.	Each
ES727	Saccomanno's Fixative, gallon	Each

Easy III™ Rapid Differential Stain

Azer Scientific offers Easy III™, a three-step, rapid differential stain. These stains and fixatives are routinely used for differential staining of peripheral blood smears and bone marrow specimens.

- Extensive applicability in cytology for use in fine needle aspiration analysis
- Allows for processing of specimen to take place in 30 seconds
- Uses 1 fixative and 2 staining solutions to achieve desired results



Cat. No.	Description	UOM
ES902-3	Easy III Step Stain Set, 3 oz. bottles (Stat Pack)	Each
ES902-16	Easy III Step Stain Set, 16 oz.	Each
ES902	Easy III Step Stain Set, 16 oz.	10 sets/case
ES906	Easy III Fixative, 16 oz. bottle	12 x 16 oz./case
ES907	Easy III Stain Solution I, 16 oz.	12 x 16 oz./case
ES908	Easy III Stain Solution II, 16 oz.	12 x 16 oz./case
ES903	Easy III Fixative, gallon	4 x 1 gallon/case
ES904	Easy III Stain Solution I, gallon	4 x 1 gallon/case
ES905	Easy III Stain Solution II, gallon	4 x 1 gallon/case

Cytology Fixative Spray

- Ideal for routine cytological preparations
- Prepared cytology slides can be safely transported once coating is sprayed over the cytological smear

Cat. No.	Description	UOM
ES34841	Cytology Fixative Spray, 4 oz.	6 x 4 oz./case

Papanicolaou Stains

This group of reagents provide excellent cytoplasmic staining of gynecological and non-gynecological samples. A wide range of formulations are available to allow the end user to select from various color intensities and hues.

EA-36 and **EA-50** are used in conjunction with **OG-6** for gynecological staining.

EA-65 is used with **OG-6** for non-gynecological staining.



Description	16 oz.	UOM	Gallon	UOM	2.5 Gallon	UOM
OG-6	ES712	4/case	ES713	4/case	ES714	Each
EA-36	ES715	4/case	ES716	4/case	-	Each
EA-50	ES717	4/case	ES718	4/case	ES719	Each
EA-65	ES720	4/case	ES721	Each	ES765	Each

EASY Pap Cytology Stain

- A one step alternative to EA and OG staining
- Manufactured using only the highest quality raw materials using dyes certified by the Biological Stain Commission
- Each lot of stain undergoes a functionality test to ensure highest quality results
- Various finished good testing is performed

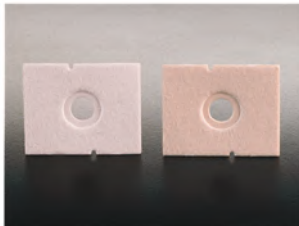
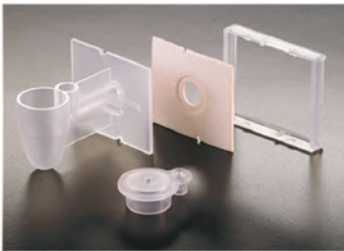
Cat. No.	Description	UOM
ES7036	EASY Pap Stain, 32 oz	12 x 32 oz/case
ES7037	EASY Pap Stain, gallon	4 x 1 gallon/case

Cytology Funnels (Wescor Cyto-System)

Designed for compatibility with the Wescor Cyto-System, these funnels will snap quickly in place allowing the pad to align correctly with the sample funnel.

- Made with a compression ring around the sample hole in order to better control the rate of absorption
- Two ports, one in the sample well and one in the tunnel, provide great versatility
- Samples are loaded directly through the chamber caps to prevent spilling
- Caps provide added safety to the operator
- Large, centered cell deposit area allows for easy and accurate screening

Cat. No.	Description	UOM
ES33271	Single Funnel (Wescor) w/ white filter paper and cap	48/case
ES33275	White Filter Paper for Wescor cytology funnel	100/case



Cytology Funnels (Shandon Cyto-Spin®)

Fully compatible with the Shandon CytoSpin® Centrifuge, our single and double cytology funnels can be used to deposit a thin layer of cells in a clearly defined area of a microscope slide. The filter card absorbs any excess fluid. No alignment necessary. Packaged with closure caps to seal in specimen for added protection.

All components are also available separately.
(Please see Cytology Funnel Accessories)

Single Cytology Funnel (with white filter card and cap): for use with sample volumes up to 0.5 mL. It provides a cell deposition area of 6 mm (28 mm squared), and can be use with all stainless steel slide clips. Includes white filter card and cap.

Single Cytology Funnel (with brown filter card and cap): for use with sample volumes up to 0.4 mL, such as spinal fluid samples. It allows for a slower absorption of fluids.

Double Cytology Funnel (with disposable sample chamber): allows for two samples to be run simultaneously on a single slide and is ideal for immunohistochemistry work. The double funnel provides a cell deposition area of 6 mm (28 mm squared) for sample volumes of up to 0.5 ml.

Standard Funnel can be used with stainless steel slide clip.
All plastic Funnel do not need a metal clip.

Cat. No.	Description	UOM
ES33210	Standard Single Funnel w/ white filter and cap	500/case
ES33211	Standard Single Funnel w/ brown filter and cap	500/case
ES33213	Standard Double Funnel w/ white filter and cap	500/case
ES33230	All Plastic Single Funnel w/ white filter and cap	480/case
ES33231	All Plastic Single Funnel w/ brown filter and cap	480/case
ES33233	All Plastic Double Funnel w/ white filter and cap	480/case

Cyto-Spin® is a registered trademark of Thermo Shandon.

Cytology Funnel Accessories

Cat. No.	Description	UOM
ES33212	Standard Single Funnel	500/case
ES33214	Standard Double Funnel	500/case
ES33232	All Plastic Single Funnel	500/case
ES33234	All Plastic Double Funnel	500/case
ES33240	Base	500/case
ES33241	Cap	500/case
ES33242	White Filter Paper (for single funnel)	200/case
ES33243	Brown Filter Paper (for single funnel)	200/case
ES33244	White Filter Paper (for double funnel)	200/case



Base

Cap



CerviSoft® Foam Cytology Swab

- For cervical specimen collection
- Non-abrasive foam tip is gentle on patients
- Foam head readily releases cells onto slides
- Polystyrene handle
- Measures 7" in length
- Sterile, individually wrapped



Cat. No.	Description	UOM
ES31201	7" Cervisoft® Foam Cytology Swab	100/box, 10 boxes/case

Cytology Brushes

Histobrush® Tapered Cytology Brush

- For cervical, Pap smear, or buccal cell collection
- Soft tapered nylon tip, polystyrene handle
- Measures 7" in length
- Sterile



Rovers® EndoCervex-Brush®

- Ideal for chlamydia and gonorrhea testing, cellular collection for Pap smear testing, liquid-based Pap preparation, and traditional slide preparation
- Tip and handle made of polypropylene
- Bristle head is stiff, yet flexible; detachable after specimen collection
- Measures 8" in length
- Non-sterile



Rovers® Combination Cervex-Brush

- For the collection of both ectocervical and endocervical cells for Pap smears
- Removable tip allows for use with both liquid-based and conventional cervical cytology tests
- Plastic bristles allow for easy transfer of specimen to glass slides or preservative fluid
- Measures 8" in length
- Non-sterile



Cat. No.	Description	UOM
ES31203	7" Histobrush® Cytology Brush	100/box, 10 boxes/case
ES31205	8" Endocervex® Cytology Brush	50/bag, 10/bags/case
ES31223	8" Rovers® Combination Cervex Brush	25/bag, 4 bags/case

Pap Jars

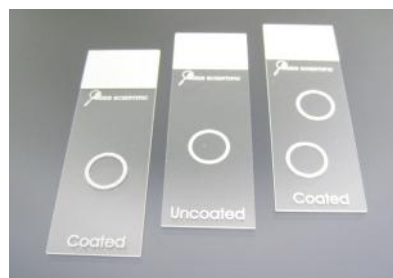
- Pre-filled with 25 mL of 95% reagent grade alcohol
- Securely holds up to 4 standard slides
- Screw top closure for safe, leak-resistant transportation of specimens



Cat. No.	Description	UOM
ES31210	Pap jar, standard lid (blue)	50/tray, 100/case
ES31214	Pap jar, locking lid (pink)	50/tray, 100/case
ES31211	Pap jar, empty (blue)	1000/case

Cytology Spin Slides

- Compatible with the Shandon® and Stat-Spin® cyto-centrifuge, the Wescor Cyto-systems, and Hettich
- Features defined markings for optimal operation and each circle is specifically marked to easily locate the centrifuged specimen
- **Packaging:** 72/box, 2 boxes/case



Cat. No.	Description	UOM
ESCS-096	Single well, untreated, compatible with Shandon®, Stat-Spin and Hettich	144/case
ESCS-097	Double well, untreated, compatible with Shandon®, Stat-Spin and Hettich	144/case
ESCS-098	Single well, treated, compatible with Shandon®, Stat-Spin and Hettich	144/case
ESCS-099	Double well, treated, compatible with Shandon®, Stat-Spin and Hettich	144/case
ESCS-090	Single well, untreated, compatible with Wescor	144/case
ESCS-091	Single well, treated, compatible with Wescor	144/case

Centrifuge Tubes

- Our 15 mL and 50 mL conical tubes are made of clear polypropylene and feature printed graduation marks
- Gamma radiation sterilized; Non-pyrogenic
- Max RCF12,00xg
- **Working temperature:** 0-40°C



Cat. No.	Description	UOM
ES-9151N	Centrifuge Tube, flat cap, 15 mL, sterile, racked	50/rack, 500/case
ES-9152N	Centrifuge Tube, flat cap, 15 mL, sterile, bulk	25/bag, 500/case
ES-9501N	Centrifuge Tube, flat cap, 50 mL, sterile, racked	25/rack, 500/case
ES-9502N	Centrifuge Tube, flat cap, 50 mL, sterile, bulk	25/bag, 500/case

Azer Cytology Preservative Solution

- Exclusive leak free duo-click container contains 30mL specially formulated preservative for the transport of urine specimens for cytology
- Interfering blood cells are gently lysed while somatic cells are preserved for manual or automated cytology processing

Cat. No.	Description	UOM
ES31219-120B	120 mL container with 30 mL fill	24/pack, 192/case

Slide Mailers

Plastic slide mailers are economical and reusable. Each features a sturdy, resealable clasp to ensure a secure closure.

Cardboard slide mailers feature a thumb groove for easy slide removal and cut corners to identify the top of mailer.



Cat. No.	Description	UOM
ES3267	Single Place Mailer, plastic	2000/case
ES3268	Double Place Mailer, plastic	1000/case
ES3269	Five Place Mailer, plastic	800/case
ES3264	Single Place Mailer, cardboard	2000/case
ES3265	Double Place Mailer, cardboard	1000/case
ES3266	Four Place Mailer, cardboard	200/case

Block Mailer

- Made specifically for paraffin blocks
- Transparent design allows for viewing of contents
- Holds up to 6 blocks
- Suitable for all standard tissue and biopsy cassettes



Cat. No.	Description	UOM
ES31574	Paraffin Block Mailer, 6 compartments	50/case

Cardboard Slide Folders

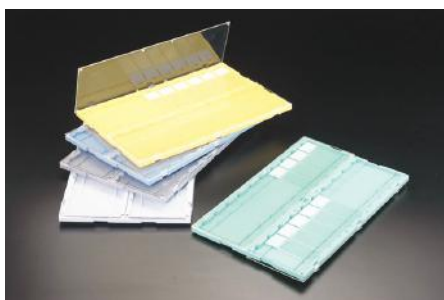
- Hold up to 20 standard microscope slides
- Each slide location is numbered
- Colored bindings allow for easy organization
- Available by the case or each



Cat. No.	Description	UOM
ES020	20-Place Cardboard Slide Folder, black binding	72/case
ES020-B	20-Place Cardboard Slide Folder, blue binding	72/case
ES020-G	20-Place Cardboard Slide Folder, green binding	72/case
ES020-R	20-Place Cardboard Slide Folder, red binding	72/case
ES020-Y	20-Place Cardboard Slide Folder, yellow binding	72/case

Plastic Slide Folders

- Hold up to 20 standard microscope slides
- Base holds slides horizontally
- Transparent door tucks under
- Numbered slide locations

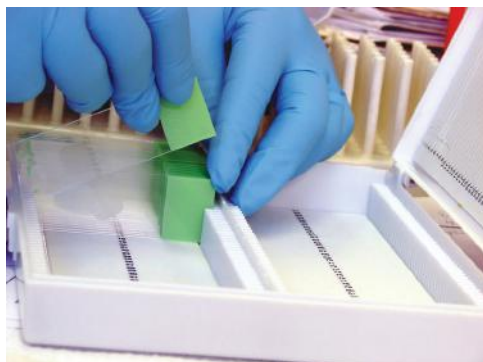


Cat. No.	Description	UOM
ES3061	Plastic Slide Folder, Blue	10/case
ES3062	Plastic Slide Folder, Green	10/case
ES3063	Plastic Slide Folder, Gray	10/case
ES3064	Plastic Slide Folder, White	10/case
ES3065	Plastic Slide Folder, Yellow	10/case
ES3066	Plastic Slide Folder, Assorted	10/case



Slide Storage Boxes

- Made of sturdy ABS plastic
- Exclusive self-locking lid
- Features a cork lined bottom
- Designed for stacking
- Index paper in lid corresponds with embossed numbers on bottom of box



Cat. No.	Description	UOM
ES3249	25 Capacity Slide Storage Box, white	20/box, 200/case
ES3250	25 Capacity Slide Storage Box, blue	20/box, 200/case
ES3251	25 Capacity Slide Storage Box, green	20/box, 200/case
ES3252	25 Capacity Slide Storage Box, red	20/box, 200/case
ES3253	25 Capacity Slide Storage Box, yellow	20/box, 200/case
ES3254	50 Capacity Slide Storage Box, white	100/case
ES3255	50 Capacity Slide Storage Box, blue	100/case
ES3256	50 Capacity Slide Storage Box, green	100/case
ES3257	50 Capacity Slide Storage Box, red	100/case
ES3258	50 Capacity Slide Storage Box, yellow	100/case
ES3259	100 Capacity Slide Storage Box, white	50/case
ES3260	100 Capacity Slide Storage Box, blue	50/case
ES3261	100 Capacity Slide Storage Box, green	50/case
ES3262	100 Capacity Slide Storage Box, red	50/case
ES3263	100 Capacity Slide Storage Box, yellow	50/case

Path Tray

- Made from a single piece of durable polypropylene
- Holds up to 20 standard microscope slides and 5 paraffin blocks or cassettes
- Slide positions are numbered for ease of reference
- Lightweight trays are stackable and easy to carry



Cat. No.	Description	UOM
ES39132	Path Tray, white	20/case

Slide Tray

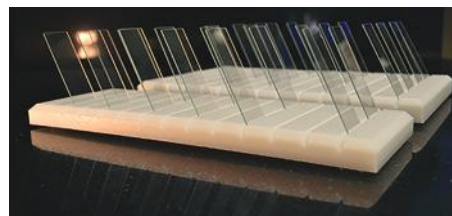
- Reusable
- Made of sturdy plastic
- Holds up to 20 standard microscope slides
- Designed for easy removal of slides
- Trays are stackable, even when holding slides
- Dimensions: 206 mm x 299 mm x 18 mm (H)



Cat. No.	Description	UOM
ES3069	Slide Tray, white	10/case

Slide Holder

- Receptacle to hold slides during evaluation and cleaning
- Made from high density polyethylene
- Surface-gripping rubber feet
- Chemical resistant
- Dimensions: 4" x 12" with 13 1/8" x 5/8" channels
7" x 12" with 24 1/8" x 5/8" channels



Cat. No.	Description	UOM
ES33794-40	Slide Holder, Holds 40 slides	Each
ES33794-90	Slide Holder, Holds 90 slides	Each

Azer-Ink Chemically Resistant Markers

Ideal for marking frosted ends of slides and cassettes in the histology laboratory.

Go to page 22 for more information.



Azer Metal Slide Cabinet

Our metal slide cabinet is the ideal choice for storing and archiving slides in just a few feet of space.

- Each slide cabinet features 6 drawers
- 4,500 standard slide capacity
- Reinforced design and heavy gauge steel makes the cabinet sturdy and stackable
- Rubber compressor blocks are included with each cabinet
- Cabinet measures 15.75" x 18.75" x 4.75"

Our slide cabinet system includes 12 cabinets and one base to allow for safe stacking of units. The slide cabinet system holds up to 54,000 slides in 2 square feet of space.



Cat. No.	Description	UOM
ES3925G	Metal Slide Cabinet, 6 drawer, green	Each
ES3927G	Metal Slide Cabinet Base, green	Each
ES3926G	Metal Slide Cabinet System, 12 cabinets and 1 base, green	Each
ES3925T	Metal Slide Cabinet, 6 drawer, tan	Each
ES3927T	Metal Slide Cabinet Base, tan	Each
ES3926T	Metal Slide Cabinet System, 12 cabinets and 1 base, tan	Each

Azer Cassette Storage Cabinet

- Holds up to 1,500 standard tissue and biopsy cassettes
- Ergonomic handle for easy opening and secure closing
- Stacking feature for stable long term storage
- Specially designed to integrate with current cabinets
- Drawer labels for quick identification

Cat. No.	Description	UOM
ES39135	Azer Tissue Cassette Storage Cabinet	Each

Cardboard Storage File for Cassettes or Microscope Slides

- Holds up to 500 tissue blocks or 2,000 slides
- Sturdy and easy to assemble
- Stackable, interlocking design
- Front drawer is designed for easily indexing contents
- Dimensions (L x W x H): 11" x 12" x 4"



Cat. No.	Description	UOM
ES080	Tissue Block Storage File, 8 drawer	10/case
ES040	Microscope Slide Storage File, 4 drawer	10/case





Biodegradable Nitrile Plus Gloves

- 92.6% biodegradable in 945 days in landfills



- Color: Black
- SW Grip
- 9.0" length
- Tear-resistant cuff
- Thickness:
 - Finger: 5.6mil, 0.14mm
 - Palm: 5.0mil, 0.13mm
 - Cuff: 4.1mil, 0.10mm

EcoTek



- Color: Teal
- SW Grip
- 9.5" length
- Tear-resistant cuff
- Thickness:
 - Finger: 5.8mil, 0.15mm
 - Palm: 5.0mil, 0.13mm
 - Cuff: 3.9mil, 0.10mm

EcoTek

Cat. No.	Description	UOM
ES86121S	Nitrile Plus gloves, black, S	100/ box, 10 boxes/case
ES86121M	Nitrile Plus gloves, black, M	100/box, 10 boxes/case
ES86121L	Nitrile Plus gloves, black, L	100/box, 10 boxes/case
ES86121XL	Nitrile Plus gloves, black, XL	100/box, 10 boxes/case
ES86122S	Nitrile Plus gloves, teal, S	100/box, 10 boxes/case
ES86122M	Nitrile Plus gloves, teal, M	100/box, 10 boxes/case
ES86122L	Nitrile Plus gloves, teal, L	100/box, 10 boxes/case
ES86122XL	Nitrile Plus gloves, teal, XL	100/box, 10 boxes/case

Nitrile Gloves

- Powder free nitrile examination glove
- Soft formulation nitrile conforms to your hand effortlessly
- Thinner, lighter and more flexible than standard nitrile gloves
- Textured fingers provide a non-slip grip
- Cost effective volume packaging, 300 gloves per box



Cat. No.	Description	UOM
ES86141XS	Nitrile gloves, extra small	300/box, 10 boxes/case
ES86141S	Nitrile gloves, small	300/box, 10 boxes/case
ES86141M	Nitrile gloves, medium	300/box, 10 boxes/case
ES86141L	Nitrile gloves, large	300/box, 10 boxes/case
ES86141XL	Nitrile gloves, extra large	300/box, 10 boxes/case

Lab Safety Goggles

- Our anti-fog chemical goggles (ES3695) are ideal for any lab setting where chemicals are being used
- We also offer goggles (ES3696) specially designed to fit over eyeglasses



Cat. No.	Description	UOM
ES3695	Standard Chemical Goggles	Each
ES3696	Safety Goggles, for eyeglasses	Each

Ultra Nitrile Gloves



- Color: Black
- Sweat management
- 11" extended-cuff
- Tear-resistant cuff
- Irritant free
- Thickness:
 - Finger: 10.1mil, 0.26mm
 - Palm: 8.5mil, 0.22mm
 - Cuff: 7.0mil, 0.18mm



- Color: Green
- Aloe infused
- Sweat management
- 11" length
- Oil/wet grip
- Thickness:
 - Finger: 10.1mil, 0.26mm
 - Palm: 8.5mil, 0.22mm
 - Cuff: 7.0mil, 0.18mm

Cat. No.	Description	UOM
ES86128S	Ultra Nitrile gloves, black, S	50/ box, 10 boxes/case
ES86128M	Ultra Nitrile gloves, black, M	50/box, 10 boxes/case
ES86128L	Ultra Nitrile gloves, black, L	50/box, 10 boxes/case
ES86128XL	Ultra Nitrile gloves, black, XL	50/box, 10 boxes/case
ES86127S	Ultra Aloe Nitrile gloves, green, S	50/box, 10 boxes/case
ES86127M	Ultra Aloe Nitrile gloves, green, M	50box, 10 boxes/case
ES86127L	Ultra Aloe Nitrile gloves, green, L	50/box, 10 boxes/case
ES86127XL	Ultra Aloe Nitrile gloves, green, XL	50/box, 10 boxes/case

Latex Gloves

- Powder-free
 - Our latex plus glove provides consistent grip, dry or wet
 - Packaging: 100 gloves/box
 - Available in XS, S, M, L, XL
- For ordering, add appropriate size abbreviation to end of Cat. No.*



Cat. No.	Description	UOM
ES3681	Latex Glove, plus	10 boxes/case

Lab Coats

- Features three pockets and a front snap closure
 - Protects against splash and spray of blood, body fluids, or chemicals
 - Subject to OSHA Directive(s) 29 CFR 1910 and OSHA Enforcement Procedure(s) CPL 02-02.069
 - Material is anti-static with high fluid-resistance
 - Available in XS, S, M, L, XL, 2XL, 3XL
- For ordering, add appropriate size abbreviation to end of Cat. No.*

Cat. No.	Description	UOM
ES86411	Lab Coat, white	10/pack
ES86412	Lab Coat, blue	10/pack
ES86415	Lab Coat, teal	10/pack
ES86417	Lab Coat, purple	10/pack
ES86419	Lab Coat, pink	10/pack

White



Purple

Blue



Pink

Teal



Neutrallyde™ Liquid Formalin Neutralizer

- Phosphate-free, eco-friendly liquid neutralizer
- Effective on formaldehyde and glutaraldehyde solutions
- No pH adjustment is required when used properly
- Treated waste may be disposed in sanitary drain
- Neutralization is complete in 8 hours



Cat. No.	Description	UOM
ES766	Neutrallyde™, 1 gallon cube	Each
ES767	Neutrallyde™, 2.5 gallon cube	Each
ES768	Neutrallyde™, 5 gallon cube	Each

Formaldehyde Odor Neutralizer

- Set pouch near formaldehyde odor or in air ducts
- Eliminates odor without the use of fragrances
- Filters carcinogenic formaldehyde gas fumes
- Provides a cleaner and safer laboratory environment
- Helps comply with EPA & OSHA regulations
- Can be reused after exposure to sun for 24 hours
- Small pouch treats up to 150 ft²
- Large pouch treats up to 300 ft²



Cat. No.	Description	UOM
ES38510	Formaldehyde Odor Neutralizer, small	Each
ES38512	Formaldehyde Odor Neutralizer, large	Each

Chemical Cube Dispenser

- Provides a stable surface for small containers when filling
- Catches chemicals dripping from spigot
- An alarm will immediately signal personnel of any spills
- Unit can be closed for compact and easy storage



Cat. No.	Description	UOM
ES86350	Chemical Cube Dispenser	Each

Form-Zero Powder Formalin Neutralizer

- One bottle neutralizes up to one gallon of 10% formalin waste or 4% glutaraldehyde with just 500 cc of powder
- Container inserts directly into a gallon container opening reducing dusting and risk to personnel
- Non-hazardous neutralized waste can be safely disposed after just 20 minutes with no pH adjustment
- Unique formulation eliminates drain clogging polymers
- Formalin-Free Confirmation Test Strips quickly and positively confirm that 10% Neutral Buffered Formalin is completely neutralized after treatment with our Form-Zero Formalin Neutralizing Powder.

Cat. No.	Description	UOM
ES86631	Form-Zero, 500 cc bottles	500 cc x 12/case
ES86632	Form-Zero, 500 cc bottles	500 cc x 32/case
ES86633	Formalin-Free Confirmation Test Strips	10 tests/kit

Polyform-F

- Polyform-F is used for the safe and rapid control of harmful vapors from Formadehyde, Glutaraldehyde and 10% Neutral Buffered Formalin.
- After granules are applied, the harmful vapors are eliminated in 2-3 minutes.

Cat. No.	Description	UOM
ES38541-32	Polyform-F, spill control granules, 32oz.	Each
ES38541-4G	Polyform-F, spill control granules, 1 gallon	4 x 1 gallon

Azer Lab Wipes

- Low lint, heavy-duty, air-layered material
- For use as an absorbent work surface for cover slipping or general lab clean up
- Each wipe measures 12.5" x 13"
- 1/4 fold packaged in packs of 50

Cat. No.	Description	UOM
ES3900	Azer Lab Wipes	900/case

Formalin Absorbent Pads

Azer Scientific's formalin absorbent pads are specially treated for the destruction of formaldehyde, 10% Neutral Buffered Formalin, and glutaraldehyde solutions. The pads also work to eliminate any chemically hazardous vapors.



Cat. No.	Description	UOM
ES728	Blue Sheet Pad, 11" x 10", 55 sheets per roll	6 rolls/case
ES729	White Pad, 6" x 14"	48/case
ES730	White Pad, 9" x 21"	30/case



Safety Monitoring Badges

- Our monitoring badges are easy to use and light weight
- Each monitor is manufactured to meet and exceed applicable OSHA and NIOSH Accuracy Requirements at both 8-hour TWA and 15-minute STEL levels.
- They may be comfortably worn in the employees breathing zone to measure personal exposure
- They may also be used for "area" exposure monitoring

Cat. No.	Description	UOM
ES7293	Ethanol monitoring badge	4/box
ES38231	Xylene vapor monitoring badge	4/box
ES38531	Formaldehyde monitoring badge	4/box

Flammable Safety Cabinets

- OSHA compliant
- Constructed of double walled 18-gauge steel
- Each cabinet is labeled with: "FLAMMABLE-KEEP FIRE AWAY"
- The self-closing doors feature a fusible link that melts at 71°C



Cat. No.	Description	UOM
ES86300	Safety Cabinet, 30 gallon, manual door	Each
ES86301	Safety Cabinet, 45 gallon, sliding door	Each
ES86311	Safety Cabinet, 45 gallon, self-closing door	Each

Scalpel Blade Remover

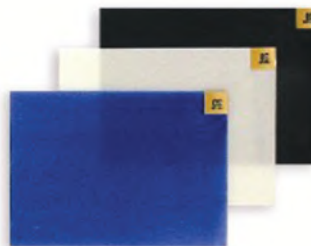
- The scalpel blade remover is simple to use with a quick, single-handed "push, click, and pull" action to remove and contain used scalpel blades
- Holds up to 100 blades
- Compatible with blades up to #25, and #3, 4, 5, 7, and 9 handles



Cat. No.	Description	UOM
ES4482	Scalpel Blade Remover	Each
ES4482-M	Mounting Bracket for Scalpel Blade Remover	Each

Sticky Mats for Laboratory

- Help to capture dust and dirt from foot traffic into laboratory
- Cohesive, anti-microbial layer peels off when it becomes dirty
- Reduces potential for the spreading of germs and bacteria
- Ideal for histology labs



Cat. No.	Description	UOM
ES3694B	Sticky Mat, 36" x 45", 30 sheets, blue	8/case
ES86618-W	Sticky Mat, 18" x 36", 30 sheets, white	4/case
ES86618-B	Sticky Mat, 18" x 36", 30 sheets, blue	4/case

Biohazard Splash Guard

- Made of clear acrylic material
- Protects user from splatter and spray of fluids
- Angle of splash guard provides excellent working environment



Cat. No.	Description	UOM
ES3939	Splash Guard, 8" x 18" x 10"	Each
ES3940	Splash Guard, 12" x 18" x 10"	Each
ES3941	Splash Guard, 12" x 23" x 15"	Each

Sharps Containers

Three grip dome for smooth opening and closing

- Puncture resistant
- Autoclavable and incinerator safe



Cat. No.	Description	UOM
ES46381-4R	0.9 L Sharps Container, red	18/case
ES46381-4Y	0.9 L Sharps Container, yellow	18/case

Benchtop Grossing Station

Azer Scientific's new benchtop grossing station is a fully customizable grossing station that can be installed on any lab bench! Azer Scientific's sales representatives will assist you in choosing the custom dimensions to fit your needs. Electricity and water hookups required.

Fume Hoods & Accessories

Azer Scientific offers a full range of fume hoods and fume hood accessories to fit the needs of any size laboratory.

Flat-Top Surgery Table

Features: 22" wide x 60" long, made from one piece of heavy gauge stainless steel, slight center elevation, shallow trough around edges, one direction tilt locks in any angle from horizontal to near vertical, attachment rail system, optional heated top.



V-Top Surgery Table

Features: 19" wide x 58" long, 360° revolving capability, horizontal to near vertical positioning options, two sliding quick-release cam cleat adjustments, attachment rail system, stainless steel trough, foot operated lift mechanism.



Pathology Workstations

Our engineers and designers will work with you to create custom designs to best suit the needs of your laboratory. We offer many high-quality stainless steel products, including: backdraft workstations, cabinets, casework, bedding dispensers, bottle filling stations, and more.



Large Animal Surgery & Necropsy Tables

We offer a full range of hydraulic large animal surgery and necropsy tables. The tables are customizable around the weight capacity needed. Table top configurations are also customizable (kidney, rectangular, and square). Mobile and fixed options available.



To learn more about our pathology workstation, fume hoods, surgery tables, and other laboratory solution, please contact us by Phone: **1-877-770-AZER** or E-Mail: **Sales@AzerSci.com**



Purifier Logic+ Class II, Type A2 Biosafety Cabinets

Purifier Logic+ Class II, Type A2 Biosafety Cabinets provide personnel, product and environmental protection from hazardous particulates such as agents that require Biosafety Level 1, 2 or 3 containment. These biological safety cabinets are designed to discharge HEPA-filtered exhaust air directly into the laboratory, or into an exhaust system through the optional Canopy Connection. These cabinets are available in 3', 4', 5' and 6' widths with different options available.



Fume Adsorbers

Fume adsorbers are geared for light duty histology cover slipping and staining areas. Activated carbon media adsorb organic odors and noxious vapors released by solvents like xylene and toluene while clean air is recirculated into the laboratory. These enclosures are low profile, completely portable and require no ductwork. They easily accommodate shallow countertops or those with overhanging cabinets. Each Fume Adsorber includes either an activated carbon, formaldehyde or ammonia filter. Exterior dimensions: 15.4" h x 23.4" d



Laboratory Hoods and Fume Hoods

- Protector® Laboratory Hoods
 - XStream® for High Performance
 - Premier® and XL for General Chemistry
 - ClassMate® for Education
 - Perchloric Acid
 - Radioisotope
 - Floor-Mounted
 - Pass-Through Laboratory Hoods
 - Basic Laboratory Hoods
- Protector Filtered Fume Hoods
 - Echo™ Benchtop and Floor-Mounted
 - Airo™ Benchtop
- Protector XVS Ventilation Stations
- Paramount® Ductless Enclosures
- Protector Work Stations
- Fume Adsorbers
- FilterMate™ Portable Exhausters
- Canopy Hoods

Contact your local Sales Representative for a price quote!



Photography credit: Dan Rockafellow

10% Neutral Buffered Formalin	
Bulk	14
Prefilled Containers	3
20% Neutral Buffered Formalin	14
37% Formaldehyde	15

A

Alcohol, Prefilled	5
Alcoholic Formalin	
Bulk	14
Prefilled Containers	5
Azer-5 Fixative	14
AzerFin™ Paraffin	17
AzerPrep Fixative	15

B

Base Molds	17
Biohazard Bags	6
Biopsy Bags	9
Biopsy Pads	10
Biosafety Cabinets	47
Block Mailer	40
Block Storage	42
Bluing Reagent	23, 24
Bouin's Fixative	
Bulk	14
Prefilled Containers	5
Brush	18

C

Cassettes	
Embedding with Metal Lid	13
Hinged Tissue, Biopsy, Mesh	11, 12
Hinged with separate lid	12, 13
One-Piece Tissue, Biopsy	10
Sleeved for Automation	11, 12, 13
Taped for Automation	11, 13
Two-Piece Tissue, Biopsy	10

C

Cassette Storage File	42
Cassette Storage Cabinet	42
Centrifuge Tubes	39
Chemical Cube Dispenser	44
Chemically Resistant Markers	22
CerviSoft™ Foam Cytology Swabs	39
Control Slides	22, 34
Coplin Jars	36
Cover Glass	22
Cutting Boards	8
Cytology Brushes	39
Cytology Fixative Spray	37
Cytology Funnels	38
Cytology Preservative Solution	39
Cytology Spin Slides	39
Cytology Stains	37
Cytology Swab	39

D

D-Limonene	16
Decalcifiers	15

E

EASY III™ Rapid Differential Stain	25, 37
EasyFix™ Alcoholic Formalin	
Bulk	14
Prefilled Containers	5
EASY Pap Cytology Stain	37
Elite Clarifying Reagents	23
Eosin-Phloxine	24
Eosin-Y (Alcoholic)	24
EXCEL Alcohols	16

**F**

Flammable Safety Cabinet	45
Folders	40
Forceps	7
Formagel®	4
Formaldehyde	15
Formaldehyde Odor Neutralizer	44
Formalin Absorbent Pads	7, 44
Formalin, Blue Tinted	14
Formalin Concentrate	15
Formalin-Free Confirmation Test Strips	44
Formalin Neutralizer	44
Formalock™ Containers	3, 5
FormaPad™	7
Freezing Spray	18
Fume Hoods	46, 47

G

Gauze	7
Gill Hematoxylin	24
Glacial Acetic Acid	15
Gloves	43
Goggles	43
Grossing Board	8
Grossing Pads	7
Grossing Station	46

H

H&E Stainer	26
Hematoxylin	
Gill	24
Iron (Weigert's)	24
Modified Harris	24
Modified Mayer's	24
Histobond™ Microscope Slides	20
Histology Reagents	23
Hollande's Fixative	
Bulk	14
Prefilled Containers	5

I

IHC Pre-Procedure Solutions	35
IHC Reagents and Buffers	35
IHC Stains	35
IHC Tissue Controls Slides	34
Isopropyl Alcohol	16

L

Lab Coats	43
Lab Wipes	7, 44
Linear Stainer	26

M

Mailers	40
Markers, Chemically Resistant	22
Metal Slide Cabinet	42
Methyl Alcohol	16
Methylene Blue	25
Michel's Transport Medium	
Bulk	14
Prefilled Containers	5
Microscope Slides	
AzerBond™ for IHC	20
Histobond™	20
Unifrost®	20
Microscope Slide Label	20
Microtome Alignment Tool	18
Microtome Blades	18
Microtome Brush	18
Mounting Medium	22

N

Nuclear Red	25
-------------	----

P

Papanicolaou Stains	37
Pap Jars	39

P

Paraffin	17
Paraffin Dispenser	17
Pathology Containers	
Screw Top	6
Snap Top	6
Pathology Grossing Board	8
Pathology Workstation	46
Path Tray	41
Potassium Hydroxide	15
Polyform-F	44
Prestige Histology Stains	23
Prefilled Formalin Containers	3
Prostate Biopsy Kits	4

R

Rapid Differential Stain	25, 37
Rapid Freeze™	18
Reagent Grade Alcohols	16

S

Saccomanno's Fixative	37
Safety Goggles	43
Saturated Lithium Carbonate Solution	24
Safety Monitoring Badges	45
Scales	9
Scalpels	8, 9
Scalpel Blade Remover	9, 45
Schiff's Reagent	25
Self Laminating Slide Labels	20
Sharps Container	45
Slide Folders	40
Slide Holder	41
Slide Hybridization System, IHC	35
Slide Mailers	40
Slide Printer	21
Slide Storage Boxes	41
Slide Tray	41
Slide Warmer	19

S

Special Stain Kits	27
Splash Guard	45
Stainer	26
Staining Dishes, Glass	36
Staining Jars	36
Staining Trays	36
Sticky Mats	45
Surgery Tables	46

T

Task Wipes	18
Tissue Control Slides	34
Tissue Floating Baths	19
Tissue Marking Dyes	8
Trimming Blades	9

U

Ultra Histology Stains	23
Unifrost® Microscope Slides	20

W

Water	
Deionized	16
High Purity	16
Reagent Grade	16
Wax Trimmer	17

X

Xylene	16
Xylene Substitute, Everclear	16

Z

Zinc Formalin	
Bulk	14
Prefilled Containers	5



1-877-770-2937







701 Hemlock Road,
Morgantown PA 19543



Info@AzerSci.com



www.AzerSci.com

Connect with Us:    



An ISO 13845: 2016 Certified Company

Volume 4